

# National Information Assurance Partnership Common Criteria Evaluation and Validation Scheme



## Validation Report Cisco ASA 9.20 on Firepower 4100 and 9300 Security Appliances

**Report Number:** CCEVS-VR-VID11512-2025  
**Dated:** January 10, 2025  
**Version:** 1.0

National Institute of Standards and Technology  
Information Technology Laboratory  
100 Bureau Drive  
Gaithersburg, MD 20899

Department of Defense  
ATTN: NIAP, Suite 6982  
9800 Savage Road  
Fort Meade, MD 20755-6982

## **ACKNOWLEDGEMENTS**

### **Validation Team**

Linda Morrison  
Lisa Mitchell  
Jenn Dotson  
Sheldon Durrant  
Randy Heimann  
Lori Sarem  
Chris Thorpe  
*The MITRE Corporation*

### **Common Criteria Testing Laboratory**

Ryan Hagedorn  
Cornelius Haley  
Will Micknick  
*Gossamer Security Solutions, Inc.*  
*Columbia, MD*

## Table of Contents

1	Executive Summary .....	1
2	Identification .....	2
3	Architectural Information .....	5
3.1	TOE Description .....	5
3.2	TOE Evaluated Platforms .....	5
3.3	TOE Architecture.....	5
3.4	Physical Boundaries.....	6
4	Security Policy .....	7
4.1	Security audit .....	7
4.2	Cryptographic support .....	7
4.3	User data protection .....	7
4.4	Identification and authentication.....	7
4.5	Security management.....	8
4.6	Protection of the TSF .....	8
4.7	TOE access.....	9
4.8	Trusted path/channels .....	9
4.9	Filtering.....	9
5	Assumptions & Clarification of Scope .....	11
6	Documentation .....	12
7	IT Product Testing .....	13
7.1	Developer Testing.....	13
7.2	Evaluation Team Independent Testing .....	13
8	TOE Evaluated Configuration .....	14
8.1	Evaluated Configuration .....	14
8.2	Excluded Functionality .....	14
9	Results of the Evaluation .....	16
9.1	Evaluation of the Security Target (ASE) .....	16
9.2	Evaluation of the Development (ADV) .....	16
9.3	Evaluation of the Guidance Documents (AGD) .....	16
9.4	Evaluation of the Life Cycle Support Activities (ALC) .....	17
9.5	Evaluation of the Test Documentation and the Test Activity (ATE) .....	17
9.6	Vulnerability Assessment Activity (VAN).....	17
9.7	Summary of Evaluation Results.....	18
10	Validator Comments/Recommendations .....	19
11	Annexes.....	20
12	Security Target.....	21
13	Glossary .....	22
14	Bibliography .....	23

# 1 Executive Summary

This report documents the assessment of the National Information Assurance Partnership (NIAP) validation team of the evaluation of Cisco ASA 9.20 on Firepower 4100 and 9300 Security Appliances solution provided by Cisco Systems, Inc. It presents the evaluation results, their justifications, and the conformance results. This Validation Report is not an endorsement of the Target of Evaluation by any agency of the U.S. government, and no warranty is either expressed or implied.

The evaluation was performed by the Gossamer Security Solutions (Gossamer) Common Criteria Testing Laboratory (CCTL) in Columbia, MD, United States of America, and was completed in January 2025. The information in this report is largely derived from the Evaluation Technical Report (ETR) and associated test reports, all written by Gossamer Security Solutions. The evaluation determined that the product is both Common Criteria Part 2 Extended and Part 3 Conformant, and meets the assurance requirements of the *PP-Configuration for Network Devices, Stateful Traffic Filter Firewalls, and Virtual Private Network Gateways*, Version 1.3, 18 August 2023 (CFG\_NDcPP-FW-VPNGW\_v1.3) which includes the Base PP: *collaborative Protection Profile for Network Devices*, Version 2.2e, 23 March 2020 (NDcPP22e) with the *PP-Module for Stateful Traffic Filter Firewalls*, Version 1.4 + Errata 20200625, 25 June 2020 (STFFW14e), and the *PP-Module for VPN Gateways*, Version 1.3, 25 August 2023 (VPNGW13).

The Target of Evaluation (TOE) is the Cisco ASA 9.20 on Firepower 4100 and 9300 Security Appliances.

The TOE identified in this Validation Report (VR) has been evaluated at a NIAP approved Common Criteria Testing Laboratory using the *Common Methodology for IT Security Evaluation* (Version 3.1, Rev 5) for conformance to the *Common Criteria for IT Security Evaluation* (Version 3.1, Rev 5). This VR applies only to the specific version of the TOE as evaluated. The evaluation has been conducted in accordance with the provisions of the NIAP Common Criteria Evaluation and Validation Scheme and the conclusions of the testing laboratory in the evaluation technical report are consistent with the evidence provided.

The validation team monitored the activities of the evaluation team, provided guidance on technical issues and evaluation processes, and reviewed the individual work units and successive versions of the ETR. The validation team found that the evaluation showed that the product satisfies all of the functional requirements and assurance requirements stated in the Security Target (ST). Therefore the validation team concludes that the testing laboratory's findings are accurate, the conclusions justified, and the conformance results are correct. The conclusions of the testing laboratory in the evaluation technical report are consistent with the evidence produced.

The technical information included in this report was obtained from the Cisco ASA 9.20 on Firepower 4100 and 9300 Security Appliances Security Target, version 1.0, December 18, 2024 and analysis performed by the validation team.

## 2 Identification

The CCEVS is a joint National Security Agency (NSA) and National Institute of Standards and Technology (NIST) effort to establish commercial facilities to perform trusted product evaluations. Under this program, security evaluations are conducted by commercial testing laboratories called Common Criteria Testing Laboratories (CCTLs) using the Common Evaluation Methodology (CEM) in accordance with National Voluntary Laboratory Assessment Program (NVLAP) accreditation.

The NIAP Validation Body assigns Validators to monitor the CCTLs to ensure quality and consistency across evaluations. Developers of information technology products desiring a security evaluation contract with a CCTL and pay a fee for their product’s evaluation. Upon successful completion of the evaluation, the product is added to NIAP’s Validated Products List.

Table 1 provides information needed to completely identify the product, including:

- The Target of Evaluation (TOE): the fully qualified identifier of the product as evaluated.
- The Security Target (ST), describing the security features, claims, and assurances of the product.
- The conformance result of the evaluation.
- The Protection Profile to which the product is conformant.
- The organizations and individuals participating in the evaluation.

**Table 1: Evaluation Identifiers**

Item	Identifier
<b>Evaluation Scheme</b>	United States NIAP Common Criteria Evaluation and Validation Scheme
<b>TOE</b>	Cisco ASA 9.20 on Firepower 4100 and 9300 Security Appliances (Specific models identified in Section 8)
<b>Protection Profile</b>	<i>PP-Configuration for Network Devices, Stateful Traffic Filter Firewalls, and Virtual Private Network Gateways</i> , Version 1.3, 18 August 2023 (CFG_NDcPP-FW-VPNGW_v1.3) which includes the Base PP: <i>collaborative Protection Profile for Network Devices</i> , Version 2.2e, 23 March 2020 (NDcPP22e) with the <i>PP-Module for Stateful Traffic Filter Firewalls</i> , Version 1.4 + Errata 20200625, 25 June 2020 (STFFW14e), and the <i>PP-Module for VPN Gateways</i> , Version 1.3, 25 August 2023 (VPNGW13)
<b>ST</b>	<i>Cisco ASA 9.20 on Firepower 4100 and 9300 Security Appliances Security Target</i> , version 1.0, December 18, 2024
<b>Evaluation Technical Report</b>	<i>Evaluation Technical Report for Cisco ASA 9.20 on Firepower 4100 and 9300 Security Appliances</i> , version 0.3, January 7, 2025
<b>CC Version</b>	<i>Common Criteria for Information Technology Security Evaluation</i> , Version 3.1, rev 5
<b>Conformance Result</b>	CC Part 2 extended, CC Part 3 conformant
<b>Sponsor</b>	Cisco Systems, Inc.

<b>Item</b>	<b>Identifier</b>
<b>Developer</b>	Cisco Systems, Inc.
<b>Common Criteria Testing Lab (CCTL)</b>	Gossamer Security Solutions, Inc. Columbia, MD
<b>CCEVS Validators</b>	The MITRE Corporation



## 3 Architectural Information

Note: The following architectural description is based on the description presented in the Security Target.

The Cisco Firepower 4100 and 9300 security appliances (TOE) are purpose-built, scalable platforms with firewall and VPN capabilities provided by Adaptive Security Appliances (ASA) software.

### 3.1 TOE Description

The TOE is comprised of both software and hardware. The TOE hardware models include FP 4112, 4115, 4125, 4145 and 9300. The software is comprised of the Adaptive Security Appliance software image Release 9.20, with ASDM, running on the security module and FXOS 2.14 running on Supervisor blade.

The models that comprise the TOE have common hardware characteristics (for example, the same FXOS image runs on all the models 4100 series and 9300, and the same ASA image runs on the security module regardless of the platforms). On the other hand, the differing characteristics affect only non-TSF relevant functionality (such as throughput, processing speed, number and type of network connections supported, number of concurrent connections supported, and amount of storage) and therefore support security equivalency of the TOE in terms of hardware.

### 3.2 TOE Evaluated Platforms

Detail regarding the evaluated configuration is provided in Section 8 below.

### 3.3 TOE Architecture

The TOE consists of a physical device and includes the Cisco ASA 9.20 software and FXOS 2.14 (running on the 4100 series or on the 9300). Each instantiation of the TOE has two or more network interfaces and is able to filter IP traffic to and through those interfaces.

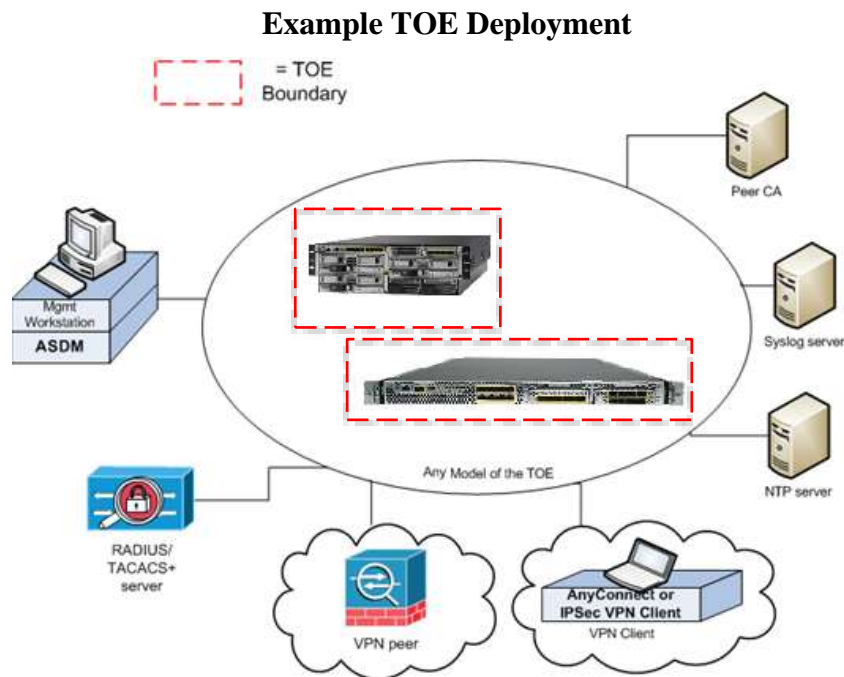
The TOE can optionally connect to an NTP server for clock updates. If the TOE is to be remotely administered, the management station must connect using SSHv2 (ASA and FXOS). When ASDM is used a remote workstation with a TLS-enabled browser must be available. The FXOS can be accessed through the FXOS WebUI and CLI. If the TOE is to be remotely administered, the management station must connect using SSHv2. It can also be administered through the ASDM. ASDM is a graphical user interface (GUI) tool that allows administrators to manage and configure Cisco ASA, the firewall features associated with them and setting up VPN connections. The ASDM provides an interface that helps with the setup, management, and monitoring of network security policies, VPNs, and other features of the Cisco ASA devices. When ASDM is used, a remote workstation with a TLS-enabled browser must be available. Cisco ASDM is typically accessed through the web browser by connecting to the ASA device's IP address.



A syslog server can also be used to store audit records, and the syslog server must support syslog over TLS (ASA) or IPsec (ASA and FXOS). The TOE is able to filter connections to/from these external entities using its IP traffic filtering, and can encrypt traffic where necessary using TLS, SSH, and/or IPsec.

### 3.4 Physical Boundaries

The following figure provides a visual depiction of an example TOE deployment. The TOE boundary is surrounded with a hashed red line.



The previous figure includes the following:

- Several examples of TOE Models
- VPN Peer (Operational Environment) or another instance of the TOE
- VPN Peer (Operational Environment) with Cisco VPN Client or AnyConnect Client
- Management Workstation (Operational Environment) with ASDM and SSH client
- Remote Authentication Server (Operational Environment)
- NTP Server (Operational Environment)
- Peer CA (Operational Environment)
- Syslog server (Operational Environment)

## 4 Security Policy

This section summarizes the security functionality of the TOE:

1. Security audit
2. Cryptographic support
3. User data protection
4. Identification and authentication
5. Security management
6. Protection of the TSF
7. TOE access
8. Trusted path/channels
9. Filtering

### 4.1 Security audit

The TOE provides extensive auditing capabilities. The TOE can audit events related to cryptographic functionality, identification and authentication, and administrative actions. The TOE generates an audit record for each auditable event. The administrator configures auditable events, performs back-up operations, and manages audit data storage. The TOE provides the administrator with a circular audit trail where the newest audit record will overwrite the oldest audit record when the local storage space for audit data is full. Audit logs are backed up over an encrypted channel to an external audit server, if so configured.

### 4.2 Cryptographic support

The TOE provides cryptography in support of other TOE security functionality. The TOE provides cryptography in support of secure connections using IPsec and TLS, and remote administrative management via SSHv2, and TLS/HTTPS. The cryptographic random bit generators (RBGs) are seeded by an entropy noise source.

### 4.3 User data protection

The TOE ensures that all information flows from the TOE do not contain residual information from previous traffic. Packets are padded with zeros. Residual data is never transmitted from the TOE.

### 4.4 Identification and authentication

The TOE performs two types of authentication: device-level authentication of the remote device (VPN peers) and user authentication for the authorized administrator of the TOE. Device-level authentication allows the TOE to establish a secure channel with a trusted peer. The secure channel is established only after each device authenticates the other. Device-level authentication is performed via IKE/IPsec X509v3 certificate-based authentication or pre-shared key methods.

The TOE provides authentication services for administrative users wishing to connect to the TOEs secure CLI and GUI administrator interfaces. The TOE requires authorized administrators to authenticate prior to being granted access to any of the management functionality. The TOE can be configured to require a minimum password length of 8-127 characters for ASA and 8-80 characters for FXOS. The TOE also implements a lockout mechanism if the number of configured unsuccessful authentication attempts has been exceeded.

The TOE provides administrator authentication against a local user database. Password-based authentication can be performed on the serial console, SSHv2, and HTTPS interfaces. The TOE optionally supports use of AAA server including RADIUS and TACACS+ (part of the IT Environment) for authentication of administrative users attempting to connect to the TOE.

## **4.5 Security management**

The TOE provides secure administrative services for management of general TOE configuration and the security functionality provided by the TOE. All TOE administration occurs either through a secure SSHv2 or TLS/HTTPS session, or via a local console connection. The TOE provides the ability to securely manage all TOE administrative users; all identification and authentication; all audit functionality of the TOE; all TOE cryptographic functionality; the timestamps maintained by the TOE and the information flow control policies enforced by the TOE including encryption/decryption of information flows for VPNs. The TOE supports an “authorized administrator” role, which equates to any account authenticated to an administrative interface (CLI or GUI, but not VPN), and possessing sufficient privileges to perform security-relevant administrative actions.

When a secure session is initially established, the TOE displays an administrator-configurable warning banner. This is used to provide any information deemed necessary by the administrator prior to logging in. After a configurable period of inactivity, administrative sessions will be terminated, requiring administrators to re-authenticate.

## **4.6 Protection of the TSF**

The TOE protects against interference and tampering by untrusted subjects by implementing identification, authentication, and administrator roles to limit configuration to authorized administrators. The TOE prevents reading of cryptographic keys and passwords.

The TOE internally maintains the date and time. This date and time are used as the timestamp that is applied to audit records generated by the TOE. Administrators can update the TOE’s clock manually. Additionally, the TOE performs testing to verify correct operation of the appliance itself and that of the cryptographic module. Whenever any system failures occur within the TOE the TOE will cease operation.

The TOE provides the ability to manually upgrade firmware/software for security administrators. Administrators can query the current executing version of the TOE’s firmware/software and the most recently installed version via a CLI command.

## **4.7 TOE access**

When an administrative session is initially established, the TOE displays an administrator-configurable warning banner. This is used to provide any information deemed necessary by the administrator. After a configurable period of inactivity, administrator and VPN client sessions will be terminated, requiring re-authentication. The TOE also supports direct connections from VPN clients and protects against threats related to those client connections. The TOE disconnects sessions that have been idle too long and can be configured to deny sessions based on IP, time, and day, and to NAT external IPs of connecting VPN clients to internal network addresses. Administrators can update the TOE's clock manually via ASA or FXOS or can configure the TOE (FXOS) to use NTP via an IPsec tunnel to synchronize the TOE's clock with an external time source.

## **4.8 Trusted path/channels**

The TOE supports establishing trusted paths between itself and remote administrators using SSHv2 for CLI access, and TLS/HTTPS for GUI/ASDM access apart from tunneling the ASDM and/or SSH connections in IPsec VPN tunnels. The TOE supports use of TLS and/or IPsec for connections with remote syslog servers. The TOE can use IPsec to encrypt connections with remote authentication servers (e.g. RADIUS, TACACS+). The TOE can establish trusted paths of peer-to-peer VPN tunnels using IPsec, and VPN client tunnels using IPsec or TLS. Note that the VPN client is in the operational environment.

## **4.9 Filtering**

The TOE provides stateful traffic firewall functionality including IP address-based filtering (for IPv4 and IPv6) to address the issues associated with unauthorized disclosure of information, inappropriate access to services, misuse of services, disruption or denial of services, and network-based reconnaissance. Address filtering can be configured to restrict the flow of network traffic between protected networks and other attached networks based on source and/or destination IP addresses. Port filtering can be configured to restrict the flow of network traffic between protected networks and other attached networks based on the originating (source) and/or receiving (destination) port (service). Stateful packet inspection is used to aid in the performance of packet flow through the TOE and to ensure that packets are only forwarded when they're part of a properly established session. The TOE supports protocols that can spawn additional sessions in accordance with the protocol RFCs where a new connection will be implicitly permitted when properly initiated by an explicitly permitted session. The File Transfer Protocol is an example of such a protocol, where a data connection is created as needed in response to an explicitly allowed command connection. System monitoring functionality includes the ability to generate audit messages for any explicitly defined (permitted or denied) traffic flow. TOE administrators have the ability to configure permitted and denied traffic flows, including adjusting the sequence in which flow control rules will be applied, and to apply rules to any network interface of the TOE.

The TOE also provides packet filtering and secure IPsec tunneling. The tunnels can be established between two trusted VPN peers as well as between remote VPN clients and the TOE. More accurately, these tunnels are sets of security associations (SAs). The SAs define the protocols and algorithms to be applied to sensitive packets and specify the keying material to be used. SAs are unidirectional and are established per the ESP security protocol. An authorized administrator can define the traffic that needs to be protected via IPsec by configuring access lists (permit, deny, log) and applying these access lists to interfaces using crypto map set.

## 5 Assumptions & Clarification of Scope

### *Assumptions*

The Security Problem Definition, including the assumptions, may be found in the following documents:

- *collaborative Protection Profile for Network Devices*, Version 2.2e, 23 March 2020 (NDcPP22e)
- *PP-Module for Stateful Traffic Filter Firewalls*, Version 1.4 + Errata 20200625, 25 June 2020 (STFFW14e)
- *PP-Module for VPN Gateways*, Version 1.3, 25 August 2023 (VPNGW13)

That information has not been reproduced here and the NDcPP22e/STFFW14e/VPNGW13 should be consulted if there is interest in that material.

### *Clarification of scope*

The scope of this evaluation was limited to the functionality and assurances covered in the NDcPP22e/STFFW14e/VPNGW13 as described for this TOE in the Security Target. Other functionality included in the product was not assessed as part of this evaluation. All other functionality provided by the devices needs to be assessed separately, and no further conclusions can be drawn about their effectiveness.

All evaluations (and all products) have limitations, as well as potential misconceptions that need clarification. This text covers some of the more important limitations and clarifications of this evaluation. Note that:

- As with any evaluation, this evaluation only shows that the evaluated configuration meets the security claims made with a certain level of assurance (the assurance activities specified in the collaborative Protection Profile for Network Devices with the Firewalls and VPN Gateways Modules and performed by the evaluation team).
- This evaluation covers only the specific device models and software as identified in this document, and not any earlier or later versions released or in process.
- Apart from the Admin Guide, additional customer documentation for the specific Firewall, VPN Gateway, Router models was not included in the scope of the evaluation and therefore should not to be relied upon when configuring or operating the device as evaluated.
- This evaluation did not specifically search for, nor attempt to exploit, vulnerabilities that were not “obvious” or vulnerabilities to objectives not claimed in the ST. The CEM defines an “obvious” vulnerability as one that is easily exploited with a minimum of understanding of the TOE, technical sophistication and resources.
- The functionality evaluated is scoped exclusively to the security functional requirements specified in the NDcPP22e/STFFW14e/VPNGW13 and applicable Technical Decisions. Any additional security related functional capabilities of the TOE were not covered by this evaluation.

## 6 Documentation

The following documents were available with the TOE for evaluation:

- *Cisco ASA 9.20 on Firepower 4100 and 9300 Security Appliances Preparative Procedures & Operational User Guide for the Common Criteria Certified Configuration*, Version 1.0, January 7, 2025
- *Cisco FXOS 2.14 on Firepower 4100 and 9300 Preparative Procedures & Operational User Guide for the Common Criteria Certified Configuration*, Version 1.0, December 18, 2024

Any additional customer documentation provided with the product, or that is available online was not included in the scope of the evaluation and therefore should not to be relied upon when configuring or operating the device as evaluated.

To use the product in the evaluated configuration, the product must be configured as specified in the Guidance Documentation listed above. Consumers are encouraged to download the configuration guides from the NIAP website to ensure the device is configured as evaluated.

## **7 IT Product Testing**

This section describes the testing efforts of the developer and the evaluation team. It is derived from information contained in the proprietary *Detailed Test Report for Cisco ASA 9.20 on Firepower 4100 and 9300 Security Appliances*, Version 0.4, January 7, 2025 (DTR), as summarized in the evaluation Assurance Activity Report (AAR).

### **7.1 Developer Testing**

No evidence of developer testing is required in the assurance activities for this product.

### **7.2 Evaluation Team Independent Testing**

The evaluation team verified the product according to a Common Criteria Certification document and ran the tests specified in the NDcPP22e/STFFW14e/VPNGW13 including the tests associated with optional requirements. The Independent Testing activity is documented in the AAR, which is publicly available, and is not duplicated here.



## 8 TOE Evaluated Configuration

### 8.1 Evaluated Configuration

The evaluated configuration consists of the following models:

TOE Configuration	Hardware Configurations	Software Version
<b>FP 4112</b> <b>FP 4115</b> <b>FP 4125</b> <b>FP 4145</b>	<p>The Firepower 4100 chassis contains the following components:</p> <p>Network module 1 with eight fixed SFP+ ports (1G and 10G connectivity) (Broadcom), the management port (Marvell), RJ-45 console port, Type A USB port, PID and S/N card, locator indicator, and power switch</p> <p>Two network modules slots (network module 2 and network module 3)</p> <p>Two (1+1) redundant power supply module slots</p> <p>Six fan module slots</p> <p>Two SSD bays</p>	FXOS release 2.14 and ASA release 9.20
<b>FP 9300</b>	<p>The Firepower 9300 chassis contains the following components:</p> <p>Firepower 9300 Supervisor—Chassis supervisor module</p> <p>Management port (Marvell)</p> <p>RJ-45 console port</p> <p>Type A USB port</p> <p>Eight ports for 1 or 10 Gigabit (Broadcom) Ethernet SFPs (fiber and copper)</p> <p>Firepower 9300 Security Module—Up to three security modules</p> <ul style="list-style-type: none"> <li>◦ 800 GB of solid state storage per security blade (2 x 800 GB solid state drives running RAID1)</li> </ul> <p>Firepower Network Module—Two single-wide network modules or one double-wide network module</p> <p>Two power supply modules (AC or DC)</p> <p>Four fan modules</p>	FXOS release 2.14 and ASA release 9.20

### 8.2 Excluded Functionality

The following functionality is excluded from the evaluation.

**Table 2: Excluded Functionality**

Excluded Functionality	Exclusion Rationale
Telnet for management purposes	Telnet passes authentication credentials in clear text and is disabled by default.
Secure Policy Manager is excluded from the evaluated configuration	Use of Security Policy Manager is beyond the scope of this Common Criteria evaluation.

Filtering of non-IP traffic provided by the EtherType option when configuring information flow policies is excluded from the evaluated configuration.	Use of non-IP traffic filtering is beyond the scope of this Common Criteria evaluation.
Smart Call Home. The Smart Call Home feature provides personalized, e-mail-based and web-based notification to customers about critical events involving their individual systems.	Use of Smart Call Home is beyond the scope of this Common Criteria evaluation.
ASA Cluster functionality is excluded from the evaluated configuration.	Use of ASA Clustering is beyond the scope of this Common Criteria evaluation.

These services will be disabled by configuration. The exclusion of this functionality does not affect compliance to the collaborative Protection Profile for Network Devices (cpp\_nd\_v2.2e), PP-Module for Stateful Traffic Filter Firewalls (mod\_cpp\_fw\_v1.4e) and PP-Module for Virtual Private Network (VPN) Gateways (mod\_vpngw\_v1.3).

## **9 Results of the Evaluation**

The results of the assurance requirements are generally described in this section and are presented in detail in the proprietary ETR. The reader of this document can assume that all assurance activities and work units received a passing verdict.

A verdict for an assurance component is determined by the resulting verdicts assigned to the corresponding evaluator action elements. The evaluation was conducted based upon CC version 3.1 rev 5 and CEM version 3.1 rev 5. The evaluation determined the Cisco ASA 9.20 on Firepower 4100 and 9300 Security Appliances TOE to be Part 2 extended, and to meet the SARs contained in the NDcPP22e/STFFW14e/VPNGW13.

### **9.1 Evaluation of the Security Target (ASE)**

The evaluation team applied each ASE CEM work unit. The ST evaluation ensured the ST contains a description of the environment in terms of policies and assumptions, a statement of security requirements claimed to be met by the Cisco ASA 9.20 on Firepower 4100 and 9300 Security Appliances products that are consistent with the Common Criteria, and product security function descriptions that support the requirements.

The validation team reviewed the work of the evaluation team and found that sufficient evidence and justification was provided by the evaluation team to confirm that the evaluation was conducted in accordance with the requirements of the CEM, and that the conclusion reached by the evaluation team was justified.

### **9.2 Evaluation of the Development (ADV)**

The evaluation team applied each ADV CEM work unit. The evaluation team assessed the design documentation and found it adequate to aid in understanding how the TSF provides the security functions. The design documentation consists of a functional specification contained in the Security Target and Guidance documents. Additionally, the evaluator performed the assurance activities specified in the NDcPP22e/STFFW14e/VPNGW13 related to the examination of the information contained in the TSS.

The validation team reviewed the work of the evaluation team and found that sufficient evidence and justification was provided by the evaluation team to confirm that the evaluation was conducted in accordance with the requirements of the CEM, and that the conclusion reached by the evaluation team was justified.

### **9.3 Evaluation of the Guidance Documents (AGD)**

The evaluation team applied each AGD CEM work unit. The evaluation team ensured the adequacy of the user guidance in describing how to use the operational TOE. Additionally, the evaluation team ensured the adequacy of the administrator guidance in describing how to securely administer the TOE. All of the guides were assessed during the design and testing phases of the evaluation to ensure they were complete.

The validation team reviewed the work of the evaluation team and found that sufficient evidence and justification was provided by the evaluation team to confirm that the evaluation was conducted in accordance with the requirements of the CEM, and that the conclusion reached by the evaluation team was justified.

#### **9.4 Evaluation of the Life Cycle Support Activities (ALC)**

The evaluation team applied each ALC CEM work unit. The evaluation team found that the TOE was identified.

The validation team reviewed the work of the evaluation team and found that sufficient evidence and justification was provided by the evaluation team to confirm that the evaluation was conducted in accordance with the requirements of the CEM, and that the conclusion reached by the evaluation team was justified.

#### **9.5 Evaluation of the Test Documentation and the Test Activity (ATE)**

The evaluation team applied each ATE CEM work unit. The evaluation team ran the set of tests specified by the assurance activities in the NDcPP22e/STFFW14e/VPNGW13 and recorded the results in a Test Report, summarized in the AAR.

The validation team reviewed the work of the evaluation team and found that sufficient evidence and justification was provided by the evaluation team to confirm that the evaluation was conducted in accordance with the requirements of the CEM, and that the conclusion reached by the evaluation team was justified.

#### **9.6 Vulnerability Assessment Activity (VAN)**

The evaluation team applied each AVA CEM work unit. The vulnerability analysis is in the Detailed Test Report (DTR) prepared by the evaluator. The vulnerability analysis includes a public search for vulnerabilities. The public search for vulnerabilities did not uncover any residual vulnerability.

The evaluation team searched the following sources:

- National Vulnerability Database (<https://web.nvd.nist.gov/view/vuln/search>)
- Vulnerability Notes Database (<http://www.kb.cert.org/vuls/>)
- Rapid7 Vulnerability Database (<https://www.rapid7.com/db/vulnerabilities>)
- Tipping Point Zero Day Initiative (<http://www.zerodayinitiative.com/advisories> )
- cve.org CVE Database (<https://www.cve.org/>),
- Tenable Network Security (<http://nessus.org/plugins/index.php?view=search>)
- Offensive Security Exploit Database (<https://www.exploit-db.com/>)

The searches were performed on November 13, 2024 and December 18, 2024 with the following search terms: “ASA”, “FXOS”, “TLS”, “SSH”, “IPsec”, “IKE”, “radius”, “TACACS+”, “Cisco Security Crypto”, “FOM”, “Firepower 9300”, “Firepower 4100”, “Pentium 8925C”, “Xeon Silver 4116”, “Xeon Gold 6130”, “Xeon Gold 6138”, “Xeon Gold 6152”, “Xeon Platinum 8160”, “Xeon Platinum 8176”, “NITROX”.

The validation team reviewed the work of the evaluation team and found that sufficient evidence and justification was provided by the evaluation team to confirm that the evaluation was conducted in accordance with the requirements of the CEM, and that the conclusion reached by the evaluation team was justified.

## **9.7 Summary of Evaluation Results**

The evaluation team’s assessment of the evaluation evidence demonstrates that the claims in the ST are met. Additionally, the evaluation team’s testing also demonstrated the accuracy of the claims in the ST.

The validation team’s assessment of the evidence provided by the evaluation team is that it demonstrates that the evaluation team followed the procedures defined in the CEM, and correctly verified that the product meets the claims in the ST.

## 10 Validator Comments/Recommendations

The validation team notes that the evaluated configuration is dependent upon the TOE being configured per the evaluated configuration instructions in the *Cisco ASA 9.20 on Firepower 4100 and 9300 Security Appliances Preparative Procedures & Operational User Guide for the Common Criteria Certified Configuration*, Version 1.0, January 7, 2025 and the *Cisco FXOS 2.14 on Firepower 4100 and 9300 Preparative Procedures & Operational User Guide for the Common Criteria Certified Configuration*, Version 1.0, December 18, 2024. As stated in the Clarification of Scope, the evaluated functionality is scoped exclusively to the security functional requirements specified in the ST, and the only evaluated functionality was that which was described by the SFRs claimed in the ST. All other functionality provided by the TOE needs to be assessed separately and no further conclusions can be drawn about its effectiveness.

Consumers employing the TOE must follow the configuration instructions provided in the Configuration Guidance documentation listed in Section 6 to ensure the evaluated configuration is established and maintained. It is important to note the excluded functionality listed in Section 8.2 and follow the configuration instructions to ensure that this functionality is disabled.

Evaluation activities are strictly bound by the assurance activities described in the NDcPP22e/STFFW14e/VPNGW13 and accompanying Supporting Documents. Consumers and integrators of this TOE are advised to understand the inherent limitations of these activities and take additional measures as needed to ensure proper TOE behavior when integrated into an operational environment.

## 11 Annexes

Not applicable

## 12 Security Target

The Security Target is identified as: *Cisco ASA 9.20 on Firepower 4100 and 9300 Security Appliances Security Target, Version 1.0, December 18, 2024.*



## 13 Glossary

The following definitions are used throughout this document:

- **Common Criteria Testing Laboratory (CCTL).** An IT security evaluation facility accredited by the National Voluntary Laboratory Accreditation Program (NVLAP) and approved by the CCEVS Validation Body to conduct Common Criteria-based evaluations.
- **Conformance.** The ability to demonstrate in an unambiguous way that a given implementation is correct with respect to the formal model.
- **Evaluation.** The assessment of an IT product against the Common Criteria using the Common Criteria Evaluation Methodology to determine whether or not the claims made are justified; or the assessment of a protection profile against the Common Criteria using the Common Evaluation Methodology to determine if the Profile is complete, consistent, technically sound and hence suitable for use as a statement of requirements for one or more TOEs that may be evaluated.
- **Evaluation Evidence.** Any tangible resource (information) required from the sponsor or developer by the evaluator to perform one or more evaluation activities.
- **Feature.** Part of a product that is either included with the product or can be ordered separately.
- **Target of Evaluation (TOE).** A group of IT products configured as an IT system, or an IT product, and associated documentation that is the subject of a security evaluation under the CC.
- **Validation.** The process carried out by the CCEVS Validation Body leading to the issue of a Common Criteria certificate.
- **Validation Body.** A governmental organization responsible for carrying out validation and for overseeing the day-to-day operation of the NIAP Common Criteria Evaluation and Validation Scheme.

## 14 Bibliography

The Validation Team used the following documents to produce this Validation Report:

- [1] *Common Criteria for Information Technology Security Evaluation: Part 1: Introduction and General Model*, Version 3.1, Revision 5, April 2017.
- [2] *Common Criteria for Information Technology Security Evaluation Part 2: Security functional components*, Version 3.1, Revision 5, April 2017.
- [3] *Common Criteria for Information Technology Security Evaluation Part 3: Security assurance components*, Version 3.1 Revision 5, April 2017.
- [4] *collaborative Protection Profile for Network Devices*, Version 2.2e, 23 March 2020 (NDcPP22e).
- [5] *PP-Module for Stateful Traffic Filter Firewalls*, Version 1.4 + Errata 20200625, 25 June 2020 (STFFW14e).
- [6] *PP-Module for VPN Gateways*, Version 1.3, 25 August 2023 (VPNGW13).
- [7] *Cisco ASA 9.20 on Firepower 4100 and 9300 Security Appliances Security Target*, Version 1.0, December 18, 2024 (ST).
- [8] *Assurance Activity Report for Cisco ASA 9.20 on Firepower 4100 and 9300 Security Appliances*, Version 0.3, January 7, 2025 (AAR).
- [9] *Detailed Test Report for Cisco ASA 9.20 on Firepower 4100 and 9300 Security Appliances*, Version 0.4, January 7, 2025 (DTR).
- [10] *Evaluation Technical Report for Cisco ASA 9.20 on Firepower 4100 and 9300 Security Appliances*, Version 0.3, January 7, 2025 (ETR).
- [11] *Cisco ASA 9.20 on Firepower 4100 and 9300 Security Appliances Preparative Procedures & Operational User Guide for the Common Criteria Certified Configuration*, Version 1.0, January 7, 2025 (AGD1).
- [12] *Cisco FXOS 2.14 on Firepower 4100 and 9300 Preparative Procedures & Operational User Guide for the Common Criteria Certified Configuration*, Version 1.0, December 18, 2024 (AGD2).