



# Cisco AnyConnect Secure Mobility Client v4.10 for Android 11

## Security Target

**Version:** 0.7

**Date:** December 6, 2021

## Table of Contents

Document Introduction.....	5
Security Target Introduction .....	7
ST and TOE Reference .....	7
TOE Overview .....	7
TOE Product Type .....	7
Required non-TOE Hardware/Software/Firmware .....	8
TOE Description.....	8
TOE Evaluated Configuration.....	8
Physical Scope of the TOE .....	9
Logical Scope of the TOE .....	9
Cryptographic Support .....	9
User Data Protection .....	10
Identification and Authentication.....	10
Security Management .....	10
Privacy .....	10
Protection of the TSF .....	10
Trusted Channels .....	10
Excluded Functionality .....	10
Conformance Claims .....	11
Common Criteria Conformance Claim.....	11
Protection Profile Conformance Claim .....	11
Protection Profile Conformance Claim Rationale.....	12
TOE Appropriateness.....	12
TOE Security Problem Definition Consistency .....	12
Statement of Security Requirements Consistency.....	12
Security Problem Definition .....	14
Assumptions .....	14
Threats .....	14
Organizational Security Policies.....	17
Security Objectives.....	18
Security Objectives for the TOE.....	18
Security Objectives for the Environment.....	19
Security Requirements .....	20
Conventions.....	20
Class: Cryptographic Support (FCS) .....	22

FCS_CKM_EXT.1 Cryptographic Key Generation Services.....	22
FCS_CKM.1/VPN Cryptographic Key Generation (IKE).....	22
FCS_CKM.1(1) Cryptographic Asymmetric Key Generation.....	22
FCS_CKM.2 Cryptographic Key Establishment.....	23
FCS_COP.1(1) Cryptographic Operation – Encryption/Decryption.....	23
FCS_COP.1(2) Cryptographic Operation – Hashing.....	23
FCS_COP.1(3) Cryptographic Operation – Signing.....	23
FCS_COP.1(4) Cryptographic Operation – Keyed-Hash Message Authentication.....	23
FCS_CKM_EXT.2 Cryptographic Key Storage.....	24
FCS_CKM_EXT.4 Cryptographic Key Destruction.....	24
FCS_RBG_EXT.1 Random Bit Generation Services.....	24
FCS_STO_EXT.1 Storage of Credentials.....	24
FCS_IPSEC_EXT.1 IPsec Protocol.....	24
Class: User Data Protection (FDP).....	25
FDP_DEC_EXT.1 Access to Platform Resources.....	25
FDP_NET_EXT.1 Network Communications.....	25
FDP_DAR_EXT.1 Encryption Of Sensitive Application Data.....	25
FDP_RIP.2 Full Residual Information Protection.....	25
Class: Identification and Authentication (FIA).....	25
FIA_X509_EXT.1 X.509 Certificate Validation.....	25
FIA_X509_EXT.2 X.509 Certificate Authentication.....	26
Class: Security Management (FMT).....	26
FMT_MEC_EXT.1 Supported Configuration Mechanism.....	26
FMT_CFG_EXT.1 Secure by Default Configuration.....	26
FMT_SMF.1 Specification of Management Functions.....	26
FMT_SMF.1/VPN Specification of Management Functions (VPN).....	26
Class: Privacy (FPR).....	26
FPR_ANO_EXT.1 User Consent for Transmission of Personally Identifiable Information.....	26
Class: Protection of the TSF (FPT).....	27
FPT_API_EXT.1 Use of Supported Services and APIs.....	27
FPT_AEX_EXT.1 Anti-Exploitation Capabilities.....	27
FPT_TST_EXT.1/VPN TSF Self-Test (VPN Client).....	27
FPT_TUD_EXT.1 Integrity for Installation and Update.....	27
FPT_TUD_EXT.2 Integrity for Installation and Update.....	27
FPT_LIB_EXT.1 Use of Third Party Libraries.....	27
FPT_IDV_EXT.1 Software Identification and Versions.....	27
Class: Trusted Path/Channels (FTP).....	28

FTP_DIT_EXT.1 Protection of Data in Transit.....	28
TOE SFR Dependencies Rationale.....	28
Security Assurance Requirements.....	28
Security Assurance Requirements Rationale.....	28
Assurance Measures.....	29
TOE Summary Specification .....	30
CAVP Certificates.....	41
References.....	43
Acronyms and Terms.....	43
Obtaining Documentation and Submitting a Service Request .....	44
Contacting Cisco.....	44

## Table of Tables

Table 1. ST and TOE Identification.....	7
Table 2. Required IT Environment Components .....	8
Table 3. Excluded Functionality and Rationale.....	10
Table 4. Protection Profile and PP-Configuration Conformance .....	11
Table 5. NIAP Technical Decisions .....	11
Table 6. TOE Assumptions .....	14
Table 7. Threats.....	14
Table 8. Security Objectives for the TOE .....	18
Table 9. Security Objectives for the Environment .....	19
Table 10. Security Requirement Conventions .....	20
Table 11. Security Functional Requirements.....	20
Table 12. Assurance Requirements .....	28
Table 13. Assurance Measures .....	29
Table 14. TSS Rationale .....	30
Table 15. CAVP Certificates .....	42
Table 16. References .....	43
Table 17. Acronyms and Terms .....	43

## Table of Figures

Figure 1. TOE and Environment.....	9
------------------------------------	---

## Document Introduction

Prepared By:  
Cisco Systems, Inc.  
170 West Tasman Dr.  
San Jose, CA 95134

This document provides the basis for an evaluation of a specific Target of Evaluation (TOE), Cisco AnyConnect Secure Mobility Client v4.10 for Android 11. This Security Target (ST) defines a set of assumptions about the aspects of the environment, a list of threats that the product intends to counter, a set of security objectives, a set of security requirements, and the IT security functions provided by the TOE which meet the set of requirements. Administrators of the TOE will be referred to as administrators, Authorized Administrators, TOE administrators, semi-privileged, privileged administrators, and security administrators in this document.

### Revision History

Version	Date	Change
0.1	April 27, 2021	Initial Version
0.2	August 4, 2021	Updates
0.3	August 17, 2021	Updates
0.4	August 23, 2021	Updates
0.5	September 23, 2021	Updates to address CCTL comments
0.6	October 21, 2021	Updates for checkout package submission
0.7	December 6, 2021	Updates from Check-Out

Cisco and the Cisco logo are trademarks or registered trademarks of Cisco and/or its affiliates in the U.S. and other countries. To view a list of Cisco trademarks, go to this URL: [www.cisco.com/go/trademarks](http://www.cisco.com/go/trademarks). Third-party trademarks mentioned are the property of their respective owners. The use of the word partner does not imply a partnership relationship between Cisco and any other company. (1110R)

© 2021 Cisco Systems, Inc. All rights reserved.

## Security Target Introduction

This Security Target contains the following sections:

- Security Target Introduction
- Conformance Claims
- Security Problem Definition
- Security Objectives
- Security Requirements
- TOE Summary Specification
- References

The structure and content of this ST comply with the requirements specified in the Common Criteria (CC), Part 1, Annex A, and Part 2.

## ST and TOE Reference

This section provides information needed to identify and control this ST and its TOE.

**Table 1. ST and TOE Identification**

Name	Description
ST Title	Cisco AnyConnect Secure Mobility Client v4.10 for Android 11
ST Version	0.7
Publication Date	December 6, 2021
Vendor and ST Author	Cisco Systems, Inc.
TOE Reference	Cisco AnyConnect Secure Mobility Client v4.10 for Android 11

## TOE Overview

The TOE is Cisco AnyConnect Secure Mobility Client v4.10 for Android 11 (herein after referred to as the VPN client, or the TOE). The TOE enables remote users within an organization to communicate securely as if their devices were directly connected to a private network.

The TOE is a VPN Client software application. A virtual private network (VPN) extends the organization's private network across a shared or public network. A VPN client establishes a IKEv2/IPsec connection to a VPN Gateway which allowing the remote user to securely connect to the organization's private network.

## TOE Product Type

The TOE product type is a VPN client. A VPN client provides protection of data in transit across a shared or public network. The TOE implements IPsec which establishes a cryptographic tunnel to protect the transmission of data between IPsec peers. The VPN client is intended to be located outside an organization's private network, protecting data flows between a host and the VPN Gateway.

Use case 3 (Communication) as described in [PP\_APP\_V1.3] and use case 1 (TOE to VPN Gateway) as described in [MOD\_VPNC\_V2.3] both apply to the TOE.

## Required non-TOE Hardware/Software/Firmware

The TOE requires the following hardware/software/firmware in the IT environment when the TOE is configured in its evaluated configuration

**Table 2. Required IT Environment Components**

Component	Usage/Purpose/Description
Certificate Authority	The Certification Authority provides the TOE with valid certificates. The CA also provides the TOE with a method to check the certificate revocation status of the VPN Gateway.
Samsung Galaxy A71 running Android 11	The Android 11 platform provides an execution platform for the TOE. The TOE requires a Common Criteria certified Samsung Galaxy Device on Android 11 platform to run. Samsung Galaxy devices have been evaluated for conformance with the US Government PP for Mobile Device Fundamentals Version 3.1 as listed on the NIAP Product Compliant List (PCL).
ASA 5500-X series VPN Gateway	The Cisco ASA 5500-X with software version 9.2.2 or later functions as the head-end VPN Gateway. The Cisco AnyConnect TOE communicates only with the Cisco ASA 5500-X Series Gateway.
ASDM Management Platform	<p>The ASDM 7.1(x) or later operates from any of the following operating systems:</p> <ul style="list-style-type: none"> <li>■ Windows 7, 8, 10</li> <li>■ Windows Server 2008, 2012, 2012 R2</li> <li>■ Apple OS X 10.4 or later</li> <li>■ Ubuntu Linux 14.04</li> <li>■ Debian Linux 7</li> </ul> <p>Note that that ASDM software is installed on the ASA appliance and the management platform is used to connect to the ASA and run the ASDM. The only software installed on the management platform is a Cisco ASDM Launcher.</p>

## TOE Description

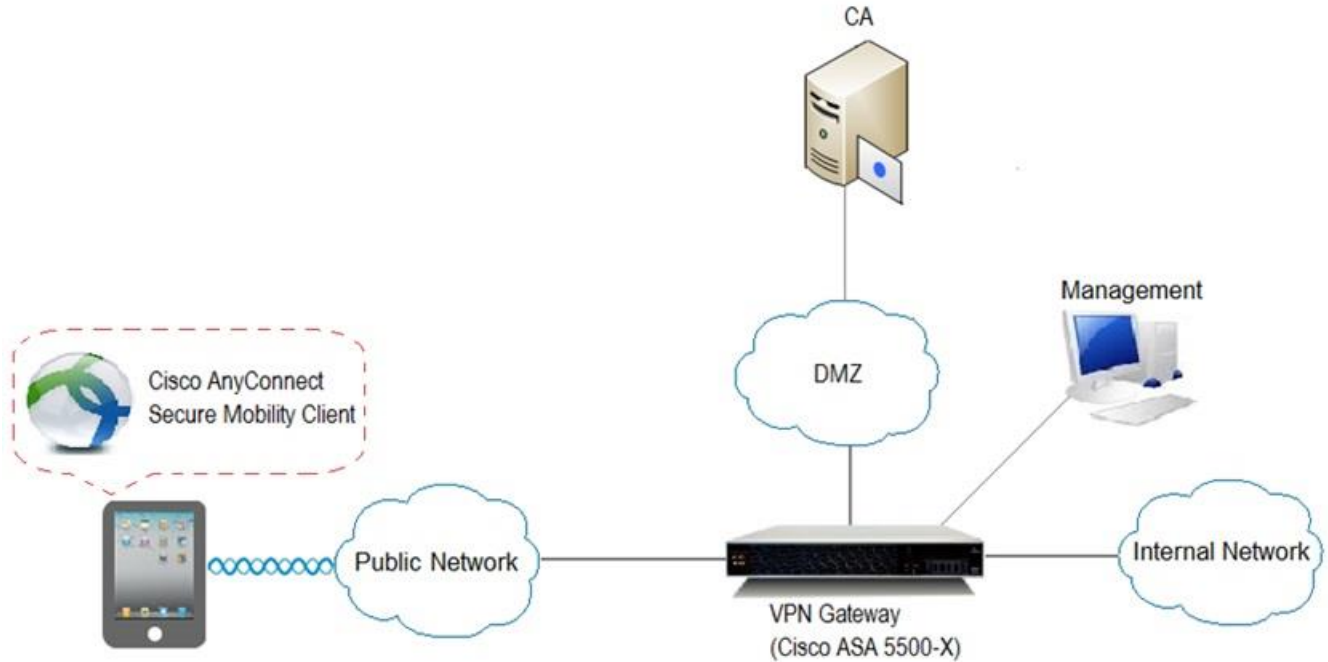
This section provides an overview of the Target of Evaluation (TOE). The Cisco AnyConnect TOE is a client application that provides remote users a secure VPN tunnel to protect data in transit on both IPv4 and IPv6 networks. The TOE provides IPsec to authenticate and encrypt network traffic travelling across an unprotected public network. By protecting the communication from unauthorized disclosure or modification, remote users can securely connect to an organization's network resources and applications.

## TOE Evaluated Configuration

The following figure provides a visual depiction of the TOE and IT Environment. The TOE is a software app running on Android 11. The TOE boundary is denoted by the hash red line.



Figure 1. TOE and Environment



Refer to the Common Criteria Administrator's Guide for instructions on installing and configuring the TOE.

## Physical Scope of the TOE

The TOE is a software-only VPN client application. The underlying mobile platform on which the TOE resides is considered part of the IT environment.

## Logical Scope of the TOE

The TOE is comprised of several security features. Each of the security features identified above consists of several security functionalities, as identified below.

- Cryptographic Support
- User Data Protection
- Identification and Authentication
- Security Management
- Privacy
- Protection of the TSF
- Trusted Channels

These features are described in more detail in the subsections below.

## Cryptographic Support

The TOE incorporates a cryptographic module, CiscoSSL FIPS Object Module, to provide the cryptography in support of IPsec with ESP symmetric cryptography for bulk AES encryption/decryption and SHA-2 algorithm for hashing. In addition the TOE provides the

cryptography to support Elliptic-Curve Diffie-Hellman key exchange and the derivation function used in the IKEv2 and ESP protocols. The cryptographic algorithm implementation has been validated for CAVP conformance. See Table 15 for certificate references.

The TOE platform provides asymmetric cryptography, which is used by the TOE for IKE peer authentication using digital signature and hashing services. In addition the TOE platform provides a DRBG.

## User Data Protection

The TOE platform ensures that residual information from previously sent network packets processed through the platform are protected from being passed into subsequent network packets.

## Identification and Authentication

The TOE and TOE platform perform device-level X.509 certificate-based authentication of the VPN Gateway during IKE v2 key exchange. Device-level authentication allows the TOE to establish a secure channel with a trusted VPN Gateway. The secure channel is established only after each endpoint successfully authenticates each other.

## Security Management

The TOE, TOE platform, and VPN Gateway provide the management functions to configure the security functionality provided by the TOE. The TOE provides a Security Administrator role and only the Security Administrator can perform the above security management functions.

## Privacy

The TOE does not store or transmit Personally Identifiable Information (PII) over a network.

## Protection of the TSF

The TOE performs a suite of self-tests during initial start-up to verify correct operation of its CAVP tested algorithms. Upon execution, the integrity of the TOEs software executables is also verified.

The TOE Platform provides for verification of TOE software updates prior to installation.

## Trusted Channels

The TOE’s implementation of IPsec provides a trusted channel ensuring sensitive data is protected from unauthorized disclosure or modification when transmitted from the host to a VPN gateway.

## Excluded Functionality

The functionality listed below is not included in the evaluated configuration.

**Table 3. Excluded Functionality and Rationale**

Function Excluded	Rationale
Non-FIPS mode of operation	This mode of operation includes non-FIPS allowed operations.
SSL Tunnel with DLTS tunneling options	[MOD_VPNC_V2.3] permits only an IPsec VPN tunnel.
Optional MDM-configured feature for storing user passwords into Android KeyStore	FCS_STO_EXT.1 in [MOD_VPNC_V2.3] permits storing only certificate credentials to the Android KeyStore.

## Conformance Claims

### Common Criteria Conformance Claim

The TOE and ST are compliant with the Common Criteria (CC) Version 3.1, Revision 5, dated: April 2017. The TOE and ST are CC Part 2 extended and CC Part 3 conformant.

### Protection Profile Conformance Claim

The TOE and ST are exactly conformant with the following PP-Configuration and Protection Profiles:

**Table 4. Protection Profile and PP-Configuration Conformance**

Protection Profile	Version	Date
PP-Configuration for Application Software and Virtual Private Network (VPN) Clients	1.0	13 August 2021
The PP-Configuration includes the following components:		
Base-PP: Protection Profile for Application Software, Version 1.3 (PP_APP_V1.3)	1.3	1 March 2019
PP-Module: PP-Module for Virtual Private Network (VPN) Clients, Version 2.3 (MOD_VPNC_V2.3)	2.3	10 August 2021

This ST applies the following NIAP Technical Decisions:

**Table 5. NIAP Technical Decisions**

Number	Title	PP	Applicable	Exclusion Rational
TD0601	X.509 SFR Applicability in App PP	[PP_APP_V1.3]	Yes	
TD0600	Conformance claim sections updated to allow for MOD_VPNC_V2.3	[PP_APP_V1.3]	Yes	
TD0598	Expanded AES Modes in FCS_COP for App PP	[PP_APP_V1.3]	Yes	
TD0582	PP-Configuration for Application Software and Virtual Private Network (VPN) Clients now allowed	[PP_APP_V1.3]	Yes	
TD0561	Signature verification update	[PP_APP_V1.3]	Yes	
TD0554	iOS/iPadOS/Android AppSW Virus Scan	[PP_APP_V1.3]	Yes	
TD0548	Integrity for installation tests in AppSW PP 1.3	[PP_APP_V1.3]	Yes	
TD0544	Alternative testing methods for FPT_AEX_EXT.1.1	[PP_APP_V1.3]	Yes	

Number	Title	PP	Applicable	Exclusion Rational
TD0543	FMT_MEC_EXT.1 evaluation activity update	[PP_APP_V1.3]	Yes	
TD0519	Linux symbolic links and FMT_CFG_EXT.1	[PP_APP_V1.3]	No	Linux platform is not applicable to this TOE
TD0515	Use Android APK manifest in test	[PP_APP_V1.3]	Yes	
TD0510	Obtaining random bytes for iOS/macOS	[PP_APP_V1.3]	No	iOS/macOS platforms are not applicable to this TOE
TD0498	Application Software PP Security Objectives and Requirements Rationale	[PP_APP_V1.3]	Yes	
TD0495	FIA_X509_EXT.1.2 Test Clarification	[PP_APP_V1.3]	Yes	
TD0465	Configuration Storage for .NET Apps	[PP_APP_V1.3]	No	Windows platform is not applicable to this TOE
TD0445	User Modifiable File Definition	[PP_APP_V1.3]	Yes	
TD0437	Supported Configuration Mechanism	[PP_APP_V1.3]	Yes	
TD0435	Alternative to SELinux for FPT_AEX_EXT.1.3	[PP_APP_V1.3]	No	Linux platform is not applicable to this TOE
TD0434	Windows Desktop Applications Test	[PP_APP_V1.3]	No	Windows platform is not applicable to this TOE
TD0427	Reliable Time Source	[PP_APP_V1.3]	Yes	
TD0416	Correction to FCS_RBG_EXT.1 Test Activity	[PP_APP_V1.3]	Yes	

## Protection Profile Conformance Claim Rationale

### TOE Appropriateness

The TOE provides all of the functionality at a level of security commensurate with that identified in the U.S. Government Protection Profiles listed in Table 4.

### TOE Security Problem Definition Consistency

The Assumptions, Threats, and Organization Security Policies included in the Security Target represent the Assumptions, Threats, and Organization Security Policies specified in [PP\_APP\_V1.3] and [MOD\_VPNC\_V2.3] for which conformance is claimed verbatim. All concepts covered in the Protection Profile Security Problem Definition are included in the Security Target Statement of Security Objectives Consistency.

The Security Objectives included in the Security Target represent the Security Objectives specified in [PP\_APP\_V1.3] and [MOD\_VPNC\_V2.3] for which conformance is claimed verbatim. All concepts covered in the Protection Profile's Statement of Security Objectives are included in the Security Target.

### Statement of Security Requirements Consistency

The Security Functional Requirements included in the Security Target represent the Security Functional Requirements specified in [PP\_APP\_V1.3] and [MOD\_VPNC\_V2.3] for which conformance is claimed verbatim. All concepts covered the Protection Profile's

Statement of Security Requirements are included in the Security Target. Additionally, the Security Assurance Requirements included in the Security Target are identical to the Security Assurance Requirements included in the claimed Protection Profiles.

## Security Problem Definition

This section identifies the following:

- Assumptions about the TOE's operational environment. These assumptions include both practical realities in the development of the TOE security requirements and the essential environmental conditions on the use of the TOE.
- Threats addressed by the TOE and the IT Environment.
- Organizational Security Policies imposed by an organization on the TOE to address its security needs.

The security problem definition below has been drawn verbatim from [PP\_APP\_V1.3] and [MOD\_VPNC\_V2.3].

## Assumptions

**Table 6. TOE Assumptions**

Assumption	Assumption Definition
A.PLATFORM	The TOE relies upon a trustworthy computing platform with a reliable time clock for its execution. This includes the underlying platform and whatever runtime environment it provides to the TOE.
A.PROPER_USER	The user of the application software is not willfully negligent or hostile, and uses the software in compliance with the applied enterprise security policy.
A.PROPER_ADMIN	The administrator of the application software is not careless, willfully negligent or hostile, and administers the software in compliance with the applied enterprise security policy.
A.NO_TOE_BYPASS	Information cannot flow onto the network to which the VPN client's host is connected without passing through the TOE.
A.PHYSICAL	Physical security, commensurate with the value of the TOE and the data it contains, is assumed to be provided by the environment.
A.TRUSTED_CONFIG	Personnel configuring the TOE and its operational environment will follow the applicable security configuration guidance.

## Threats

**Table 7. Threats**

Threat	Threat Definition
T.NETWORK_ATTACK	An attacker is positioned on a communications channel or elsewhere on the network infrastructure. Attackers may engage in communications with the application software or alter communications between the application software and other endpoints in order to compromise it.

T.NETWORK_EAVESDROP	An attacker is positioned on a communications channel or elsewhere on the network infrastructure. Attackers may monitor and gain access to data exchanged between the application and other endpoints.
T.LOCAL_ATTACK	An attacker can act through unprivileged software on the same computing platform on which the application executes. Attackers may provide maliciously formatted input to the application in the form of files or other local communications.
T.PHYSICAL_ACCESS	An attacker may try to access sensitive data at rest.

T.UNAUTHORIZED_ACCESS	<p>This PP-Module does not include requirements that can protect against an insider threat. Authorized users are not considered hostile or malicious and are trusted to follow appropriate guidance. Only authorized personnel should have access to the system or device that contains the IPsec VPN client. Therefore, the primary threat agents are the unauthorized entities that try to gain access to the protected network (in cases where tunnel mode is used) or to plaintext data that traverses the public network (regardless of whether transport mode or tunnel mode is used).</p> <p>The endpoint of the network communication can be both geographically and logically distant from the TOE, and can pass through a variety of other systems. These intermediate systems may be under the control of the adversary, and offer an opportunity for communications over the network to be compromised.</p> <p>Plaintext communication over the network may allow critical data (such as passwords, configuration settings, and user data) to be read and/or manipulated directly by intermediate systems, leading to a compromise of the TOE or to the secured environmental system(s) that the TOE is being used to facilitate communications with. IPsec can be used to provide protection for this communication; however, there are myriad options that can be implemented for the protocol to be compliant to the protocol specification listed in the RFC. Some of these options can have negative impacts on the security of the connection. For instance, using a weak encryption algorithm (even one that is allowed by the RFC, such as DES) can allow an adversary to read and even manipulate the data on the encrypted channel, thus circumventing countermeasures in place to prevent such attacks. Further, if the protocol is implemented with little-used or non-standard options, it may be compliant with the protocol specification but will not be able to interact with other, diverse equipment that is typically found in large enterprises.</p> <p>Even though the communication path is protected, there is a possibility that the IPsec peer could be duped into thinking that a malicious third-party user or system is the TOE. For instance, a middleman could intercept a connection request to the TOE, and respond to the request as if it were the TOE. In a similar manner, the TOE could also be duped into thinking that it is establishing communications with a legitimate IPsec peer when in fact it is not. An attacker could also mount a malicious man-in-the-middle-type of attack, in which an intermediate system is compromised, and the traffic is proxied, examined, and modified by this system. This attack can even be mounted via encrypted communication channels if appropriate countermeasures are not applied. These attacks are, in part, enabled by a</p>
-----------------------	---



	malicious attacker capturing network traffic (for instance, an authentication session) and “playing back” that traffic in order to fool an endpoint into thinking it was communicating with a legitimate remote entity.
T.TSF_CONFIGURATION	Configuring VPN tunnels is a complex and time-consuming process, and prone to errors if the interface for doing so is not well-specified or well-behaved. The inability to configure certain aspects of the interface may also lead to the mis-specification of the desired communications policy or use of cryptography that may be desired or required for a particular site. This may result in unintended weak or plaintext communications while the user thinks that their data are being protected. Other aspects of configuring the TOE or using its security mechanisms (for example, the update process) may also result in a reduction in the trustworthiness of the VPN client.
T.USER_DATA_REUSE	Data traversing the TOE could inadvertently be sent to a different user; since these data may be sensitive, this may cause a compromise that is unacceptable. The specific threat that must be addressed concerns user data that is retained by the TOE in the course of processing network traffic that could be inadvertently re-used in sending network traffic to a user other than that intended by the sender of the original network traffic.
T.TSF_FAILURE	Security mechanisms of the TOE generally build up from a primitive set of mechanisms (e.g., memory management, privileged modes of process execution) to more complex sets of mechanisms. Failure of the primitive mechanisms could lead to a compromise in more complex mechanisms, resulting in a compromise of the TSF.

## Organizational Security Policies

There are no organizational security policies defined in [PP\_APP\_V1.3] and [MOD\_VPNC\_V2.3].

## Security Objectives

This section identifies the security objectives of the TOE and the IT Environment. The security objectives identify the responsibilities of the TOE and the TOE's IT environment in meeting the security needs.

### Security Objectives for the TOE

The following table identifies the Security Objectives for the TOE. These security objectives reflect the stated intent to counter identified threats and/or comply with any security policies. The security objectives below have been drawn verbatim from [PP\_APP\_V1.3] and [MOD\_VPNC\_V2.3].

**Table 8. Security Objectives for the TOE**

Environment Security Objective	TOE Security Objective Definition
O.INTEGRITY	Conformant TOEs ensure the integrity of their installation and update packages, and also leverage execution environment-based mitigations. Software is seldom if ever shipped without errors. The ability to deploy patches and updates to fielded software with integrity is critical to enterprise network security. Processor manufacturers, compiler developers, execution environment vendors, and operating system vendors have developed execution environment-based mitigations that increase the cost to attackers by adding complexity to the task of compromising systems. Application software can often take advantage of these mechanisms by using APIs provided by the runtime environment or by enabling the mechanism through compiler or linker options.
O.QUALITY	To ensure quality of implementation, conformant TOEs leverage services and APIs provided by the runtime environment rather than implementing their own versions of these services and APIs. This is especially important for cryptographic services and other complex operations such as file and media parsing. Leveraging this platform behavior relies upon using only documented and supported APIs.
O.MANAGEMENT	To facilitate management by users and the enterprise, conformant TOEs provide consistent and supported interfaces for their security-relevant configuration and maintenance. This includes the deployment of applications and application updates through the use of platform-supported deployment mechanisms and formats, as well as providing mechanisms for configuration. This also includes providing control to the user regarding disclosure of any PII.
O.PROTECTED_STORAGE	To address the issue of loss of confidentiality of user data in the event of loss of physical control of the storage medium, conformant TOEs will use data-at-rest protection. This involves encrypting data and keys stored by the TOE in order to prevent unauthorized access to this data. This also includes unnecessary network communications whose consequence may be the loss of data.

O.PROTECTED_COMMS	To address both passive (eavesdropping) and active (packet modification) network attack threats, conformant TOEs will use a trusted channel for sensitive data. Sensitive data includes cryptographic keys, passwords, and any other data specific to the application that should not be exposed outside of the application.
O.AUTHENTICATION	To address the issues associated with unauthorized disclosure of information in transit, a compliant TOE's authentication ability (IPsec) will allow the TSF to establish VPN connectivity with a remote VPN gateway or peer and ensure that any such connection attempt is both authenticated and authorized.
O.CRYPTOGRAPHIC_FUNCTIONS	To address the issues associated with unauthorized disclosure of information in transit, a compliant TOE will implement cryptographic capabilities. These capabilities are intended to maintain confidentiality and allow for detection and modification of data that is transmitted outside of the TOE.
O.KNOWN_STATE	The TOE will provide sufficient measures to ensure it is operating in a known state. At minimum this includes management functionality to allow the security functionality to be configured and self-test functionality that allows it to assert its own integrity. It may also include auditing functionality that can be used to determine the operational behavior of the TOE.
O.NONDISCLOSURE	To address the issues associated with unauthorized disclosure of information at rest, a compliant TOE will ensure that non-persistent data is purged when no longer needed. The TSF may also implement measures to protect against the disclosure of stored cryptographic keys and data through implementation of protected storage and secure erasure methods. The TOE may optionally also enforce split-tunneling prevention to ensure that data in transit cannot be disclosed inadvertently outside of the IPsec tunnel.

## Security Objectives for the Environment

The following table identifies the Security Objectives for the Environment. These security objectives reflect the stated intent to counter identified threats and/or comply with any security policies. The security objectives below have been drawn verbatim from [PP\_APP\_V1.3] and [MOD\_VPNC\_V2.3].

**Table 9. Security Objectives for the Environment**

Environment Security Objective	IT Environment Security Objective Definition
OE.PLATFORM	The TOE relies upon a trustworthy computing platform for its execution. This includes the underlying operating system and any discrete execution environment provided to the TOE.
OE.PROPER_USER	The user of the application software is not willfully negligent or hostile, and uses the software within compliance of the applied enterprise security policy.

OE.PROPER_ADMIN	The administrator of the application software is not careless, willfully negligent or hostile, and administers the software within compliance of the applied enterprise security policy.
OE.NO_TOE_BYPASS	Information cannot flow onto the network to which the VPN client's host is connected without passing through the TOE.
OE.PHYSICAL	Physical security, commensurate with the value of the TOE and the data it contains, is assumed to be provided by the environment.
OE.TRUSTED_CONFIG	Personnel configuring the TOE and its operational environment will follow the applicable security configuration guidance.

## Security Requirements

This section identifies the Security Functional Requirements for the TOE. The Security Functional Requirements in this section are drawn from [CC\_PART2], [PP\_APP\_V1.3], [MOD\_VPNC\_V2.3] and NIAP Technical Decisions.

## Conventions

[CC\_PART1] defines operations on Security Functional Requirements. This document uses the following conventions to identify the operations permitted by [PP\_APP\_V1.3], [MOD\_VPNC\_V2.3] and NIAP Technical Decisions.

**Table 10. Security Requirement Conventions**

Convention	Indication
Assignment	Indicated with <i>italicized</i> text
Refinement	Indicated with <b>bold</b> text and <del>strikethroughs</del>
Selection	Indicated with <u>underlined</u> text
Assignment within a Selection	Indicated with <i><u>italicized and underlined</u></i> text
Iteration	indicated by adding a string starting with '/' (e.g. 'FCS_COP.1/Hash')

Where operations were completed in the [PP\_APP\_V1.3] or [MOD\_VPNC\_V2.3], the formatting used in the PP has been retained.

The TOE Security Functional Requirements are identified in the following table are described in more detail in the following subsections.

**Table 11. Security Functional Requirements**

Class Name	Component Identification	Component Name	Drawn From
FCS: Cryptographic Support	FCS_CKM_EXT.1.1	Cryptographic Key Generation Services	[PP_APP_V1.3]
	FCS_CKM.1.1/VPN	FCS_CKM.1/VPN Cryptographic Key Generation (IKE)	[MOD_VPNC_V2.3]

Class Name	Component Identification	Component Name	Drawn From
	FCS_CKM.1.1(1)	Cryptographic Asymmetric Key Generation	[PP_APP_V1.3]
	FCS_CKM.2.1	Cryptographic Key Establishment	[PP_APP_V1.3]
	FCS_COP.1(1)	Cryptographic Operation – Encryption/Decryption	[PP_APP_V1.3]
	FCS_COP.1(2)	Cryptographic Operation – Hashing	[PP_APP_V1.3]
	FCS_COP.1(3)	Cryptographic Operation – Signing	[PP_APP_V1.3]
	FCS_COP.1(4)	Cryptographic Operation – Keyed–Hash Message Authentication	[PP_APP_V1.3]
	FCS_CKM_EXT.2	Cryptographic Key Storage	[MOD_VPNC_V2.3]
	FCS_CKM_EXT.4	Cryptographic Key Destruction	[MOD_VPNC_V2.3]
	FCS_RBG_EXT.1	Random Bit Generation Services	[PP_APP_V1.3]
	FCS_STO_EXT.1	Storage of Credentials	[PP_APP_V1.3]
	FCS_IPSEC_EXT.1	IPsec	[MOD_VPNC_V2.3]
FDP: User Data Protection	FDP_DEC_EXT.1	Access to Platform Resources	[PP_APP_V1.3]
	FDP_NET_EXT.1	Network Communications	[PP_APP_V1.3]
	FDP_DAR_EXT.1	Encryption Of Sensitive Application Data	[PP_APP_V1.3]
	FDP_RIP.2	Full Residual Information Protection	[MOD_VPNC_V2.3]
FIA: Identification and authentication	FIA_X509_EXT.1	X.509 Certificate Validation	[PP_APP_V1.3]
	FIA_X509_EXT.2	X.509 Certificate Authentication	[PP_APP_V1.3]
FMT: Security management	FMT_MEC_EXT.1	Supported Configuration Mechanism	[PP_APP_V1.3]
	FMT_CFG_EXT.1	Secure by Default Configuration	[PP_APP_V1.3]
	FMT_SMF.1	Specification of Management Functions	[PP_APP_V1.3]
	FMT_SMF.1/VPN	Specification of Management Functions (VPN)	[MOD_VPNC_V2.3]

Class Name	Component Identification	Component Name	Drawn From
FPR: Privacy	FPR_ANO_EXT.1	User Consent for Transmission of Personally Identifiable Information	[PP_APP_V1.3]
FPT: Protection of the TSF	FPT_API_EXT.1	Use of Supported Services and APIs	[PP_APP_V1.3]
	FPT_AEX_EXT.1	Anti-Exploitation Capabilities	[PP_APP_V1.3]
	FPT_TUD_EXT.1	Integrity for Installation and Update	[PP_APP_V1.3]
	FPT_TUD_EXT.2	Integrity for Installation and Update	[PP_APP_V1.3]
	FPT_LIB_EXT.1	Use of Third Party Libraries	[PP_APP_V1.3]
	FPT_IDV_EXT.1	Software Identification and Versions	[PP_APP_V1.3]
	FPT_TST_EXT.1/VPN	TSF Self-Test (VPN Client)	[MOD_VPNC_V2.3]
FTP: Trusted path/channels	FTP_DIT_EXT.1	Protection of Data in Transit	[MOD_VPNC_V2.3]

## Class: Cryptographic Support (FCS)

### FCS\_CKM\_EXT.1 Cryptographic Key Generation Services

**FCS\_CKM\_EXT.1.1(1)** The application shall [implement asymmetric key generation].

### FCS\_CKM.1/VPN Cryptographic Key Generation (IKE)

**FCS\_CKM.1.1/VPN** The TSF shall **[invoke platform-provided functionality]** to generate **asymmetric** cryptographic keys **used for IKE peer authentication** in accordance with: [

- **FIPS PUB 186-4, “Digital Signature Standard (DSS)”, Appendix B.3 for RSA schemes;**
- **FIPS PUB 186-4, “Digital Signature Standard (DSS)”, Appendix B.4 for ECDSA schemes and implementing “NIST curves”, P-256, P-384 and [no other curves]**

]

and specified cryptographic key sizes [equivalent to, or greater than, a symmetric key strength of 112 bits] ~~that meet the following assignment: list of standards.~~

### FCS\_CKM.1(1) Cryptographic Asymmetric Key Generation

**FCS\_CKM.1.1(1)** The application shall [implement functionality] to generate asymmetric cryptographic keys in accordance with a specified cryptographic key generation algorithm

- **ECC schemes using “NIST curves” P-256, P-384 and [no other curves] that meet the following: FIPS PUB 186-4, “Digital Signature Standard (DSS)”, Appendix B.4; and,**
- **[no other key generation methods].**

## FCS\_CKM.2 Cryptographic Key Establishment

**FCS\_CKM.2.1** The application shall [implement functionality] to perform cryptographic key establishment in accordance with a specified cryptographic key establishment method:

- **[Elliptic curve-based key establishment schemes] that meets the following: [NIST Special Publication 800-56A, “Recommendation for Pair-Wise Key Establishment Schemes Using Discrete Logarithm Cryptography”]; and,**
- **[No other schemes].**

## FCS\_COP.1(1) Cryptographic Operation – Encryption/Decryption

**FCS\_COP.1.1(1)** The application shall perform encryption/decryption in accordance with a specified cryptographic algorithm [

- AES-CBC (as defined in NIST SP 800-38A) mode,
- AES-GCM (as defined in NIST SP 800-38D) mode,

] and cryptographic key sizes [128-bit, 256-bit].

## FCS\_COP.1(2) Cryptographic Operation – Hashing

**FCS\_COP.1.1(2)** The application shall perform cryptographic hashing services in accordance with a specified cryptographic algorithm

[SHA-256, SHA-384]

and message digest sizes

[256, 384]

bits that meet the following: FIPS Pub 180-4.

## FCS\_COP.1(3) Cryptographic Operation – Signing

**FCS\_COP.1.1(3)** The application shall perform *cryptographic signature services (generation and verification)* in accordance with a specified cryptographic algorithm [

- **RSA schemes** using cryptographic key sizes of 2048-bit or greater that meet the following: FIPS PUB 186-4, “Digital Signature Standard (DSS)”, Section 4,
- **ECDSA schemes** using “NIST curves” P-256, P-384 and [no other curves] that meet the following: FIPS PUB 186-4, “Digital Signature Standard (DSS)”, Section 5

].

## FCS\_COP.1(4) Cryptographic Operation – Keyed-Hash Message Authentication

**FCS\_COP.1.1(4)** The application shall perform *keyed-hash message authentication* in accordance with a specified cryptographic algorithm

- HMAC-SHA-256

and [

- SHA-384

]

with key sizes [256, 384 used in HMAC] and message digest sizes 256 and [384] bits that meet the following: FIPS Pub 198-1 *The Keyed-Hash Message Authentication Code* and FIPS Pub 180-4 *Secure Hash Standard*.

## FCS\_CKM\_EXT.2 Cryptographic Key Storage

**FCS\_CKM\_EXT.2.1** The [TOE Platform] shall store persistent secrets and private keys when not in use in platform-provided key storage.

## FCS\_CKM\_EXT.4 Cryptographic Key Destruction

**FCS\_CKM\_EXT.4.1** The [TOE] shall zeroize all plaintext secret and private cryptographic keys and CSPs when no longer required.

## FCS\_RBG\_EXT.1 Random Bit Generation Services

**FCS\_RBG\_EXT.1.1** The application shall [invoke platform-provided DRBG functionality] for its cryptographic operations.

## FCS\_STO\_EXT.1 Storage of Credentials

**FCS\_STO\_EXT.1.1** The application shall [invoke the functionality provided by the platform to securely store [X.509 Certificates]] to non-volatile memory.

## FCS\_IPSEC\_EXT.1 IPsec Protocol

**FCS\_IPSEC\_EXT.1.1** The TSF shall implement the IPsec architecture as specified in RFC 4301.

**FCS\_IPSEC\_EXT.1.2** The TSF shall implement [tunnel mode].

**FCS\_IPSEC\_EXT.1.3** The TSF shall have a nominal, final entry in the SPD that matches anything that is otherwise unmatched, and discards it.

**FCS\_IPSEC\_EXT.1.4** The TSF shall implement the IPsec protocol ESP as defined by RFC 4303 using the cryptographic algorithms [AES-GCM-128, AES-GCM-256 as specified in RFC 4106, [AES-CBC-128, AES-CBC-256 (both specified by RFC 3602) together with a Secure Hash Algorithm (SHA)-based HMAC]].

**FCS\_IPSEC\_EXT.1.5** The TSF shall implement the protocol: [

- [IKEv2 as defined in RFCs 7296 (with mandatory support for NAT traversal as specified in section 2.23), 4307, and [RFC 4868 for hash functions]].

**FCS\_IPSEC\_EXT.1.6** The TSF shall ensure the encrypted payload in the [IKEv2] protocol uses the cryptographic algorithms [AES-CBC-128, AES-CBC-256 as specified in RFC 6379 and [AES-GCM-128, AES-GCM-256 as specified in RFC 5282]].

**FCS\_IPSEC\_EXT.1.7** The TSF shall ensure that [IKEv2 SA lifetimes can be configured by [VPN Gateway] based on [length of time]]. If length of time is used, it must include at least one option that is 24 hours or less for Phase 1 SAs and 8 hours or less for Phase 2 SAs.

**FCS\_IPSEC\_EXT.1.8** The TSF shall ensure that all IKE protocols implement DH groups [19 (256-bit Random ECP), 20 (384-bit Random ECP), and [no other DH groups]].

**FCS\_IPSEC\_EXT.1.9** The TSF shall generate the secret value  $x$  used in the IKE Diffie-Hellman key exchange (" $x$ " in  $g^x \text{ mod } p$ ) using the random bit generator specified in FCS\_RBG\_EXT.1, and having a length of at least [256 (for DH Group 19), 384 (for DH Group 20)] bits.

**FCS\_IPSEC\_EXT.1.10** The TSF shall generate nonces used in IKE exchanges in a manner such that the probability that a specific nonce value will be repeated during the life a specific IPsec SA is less than  $1$  in  $2^{[256]}$ .

**FCS\_IPSEC\_EXT.1.11** The TSF shall ensure that all IKE protocols perform peer authentication using a [RSA, ECDSA] that use X.509v3 certificates that conform to RFC 4945 and [no other method].

**FCS\_IPSEC\_EXT.1.12** The TSF shall not establish an SA if the [IP address, Fully Qualified Domain Name (FQDN)] and [no other reference identifier type] contained in a certificate does not match the expected value(s) for the entity attempting to establish a connection.

**FCS\_IPSEC\_EXT.1.13** The TSF shall not establish an SA if the presented identifier does not match the configured reference identifier of the peer.



**FCS\_IPSEC\_EXT.1.14** The [VPN Gateway] shall be able to ensure by default that the strength of the symmetric algorithm (in terms of the number of bits in the key) negotiated to protect the [IKEv2 IKE\_SA] connection is greater than or equal to the strength of the symmetric algorithm (in terms of the number of bits in the key) negotiated to protect the [IKEv2 CHILD\_SA] connection.

## Class: User Data Protection (FDP)

### FDP\_DEC\_EXT.1 Access to Platform Resources

**FDP\_DEC\_EXT.1.1** The application shall restrict its access to [network connectivity, camera, [fingerprint reader, external storage]].

**FDP\_DEC\_EXT.1.2** The application shall restrict its access to [no sensitive information repositories].

### FDP\_NET\_EXT.1 Network Communications

**FDP\_NET\_EXT.1.1** The application shall restrict network communication to [user-initiated communication for [IKEv2/IPsec tunnel establishment]].

### FDP\_DAR\_EXT.1 Encryption Of Sensitive Application Data

**FDP\_DAR\_EXT.1.1** The application shall [protect sensitive data in accordance with FCS\_STO\_EXT.1] in non-volatile memory.

### FDP\_RIP.2 Full Residual Information Protection

**FDP\_RIP.2.1** The [TOE platform] shall enforce that any previous information content of a resource is made unavailable upon the [allocation of the resource to] all objects.

## Class: Identification and Authentication (FIA)

### FIA\_X509\_EXT.1 X.509 Certificate Validation

**FIA\_X509\_EXT.1.1** The application shall [invoked platform-provided functionality] to validate certificates in accordance with the following rules:

- RFC 5280 certificate validation and certificate path validation
- The certificate path must terminate with a trusted CA certificate
- The application shall validate a certificate path by ensuring the presence of the basicConstraints extension, that the CA flag is set to TRUE for all CA certificates, and that any path constraints are met
- The application shall validate that any CA certificate includes caSigning purpose in the key usage field
- The application shall validate the revocation status of the certificate using [OCSP as specified in RFC 6960].
- The application shall validate the extendedKeyUsage (EKU) field according to the following rules:
  - Certificates used for trusted updates and executable code integrity verification shall have the Code Signing purpose (id-kp 3 with OID 1.3.6.1.5.5.7.3.3) in the extendedKeyUsage field.
  - Server certificates presented for TLS shall have the Server Authentication purpose (id-kp 1 with OID 1.3.6.1.5.5.7.3.1) in the EKU field.
  - Client certificates presented for TLS shall have the Client Authentication purpose (id-kp 2 with OID 1.3.6.1.5.5.7.3.2) in the EKU field.
  - S/MIME certificates presented for email encryption and signature shall have the Email Protection purpose (id-kp 4 with OID 1.3.6.1.5.5.7.3.4) in the EKU field.

- OCSF certificates presented for OCSF responses shall have the OCSF Signing purpose (id-kp 9 with OID 1.3.6.1.5.5.7.3.9) in the EKU field.
- Server certificates presented for EST shall have the CMC Registration Authority (RA) purpose (id-kp-cmcRA with OID 1.3.6.1.5.5.7.3.28) in the EKU field.

**FIA\_X509\_EXT.1.2** The application shall treat a certificate as a CA certificate only if the basicConstraints extension is present and the CA flag is set to TRUE.

## FIA\_X509\_EXT.2 X.509 Certificate Authentication

**FIA\_X509\_EXT.2.1** The application shall use X.509v3 certificates as defined by RFC 5280 to support authentication for **IPsec** and [**no other protocols**].

**FIA\_X509\_EXT.2.2** When the application cannot establish a connection to determine the validity of a certificate, the application shall [**not accept the certificate**].

## Class: Security Management (FMT)

### FMT\_MEC\_EXT.1 Supported Configuration Mechanism

**FMT\_MEC\_EXT.1.1** The application shall [**invoke the mechanisms recommended by the platform vendor for storing and setting configuration options**].

**Application Note:** This requirement has applied NIAP TD-0437

### FMT\_CFG\_EXT.1 Secure by Default Configuration

**FMT\_CFG\_EXT.1.1** The application shall provide only enough functionality to set new credentials when configured with default credentials or no credentials.

**FMT\_CFG\_EXT.1.2** The application shall be configured by default with file permissions which protect the application's binaries and data files from modification by normal unprivileged user.

### FMT\_SMF.1 Specification of Management Functions

**FMT\_SMF.1.1** The TSF shall be capable of performing the following management functions [**no management functions**].

### FMT\_SMF.1/VPN Specification of Management Functions (VPN)

**FMT\_SMF.1.1/VPN** The TSF shall be capable of performing the following management functions: [

- Specify VPN gateways to use for connections,
- Specify client credentials to be used for connections,
- Configure the reference identifier of the peer

]

## Class: Privacy (FPR)

### FPR\_ANO\_EXT.1 User Consent for Transmission of Personally Identifiable Information

**FPR\_ANO\_EXT.1.1** The application shall [**not transmit PII over a network**].

## Class: Protection of the TSF (FPT)

### FPT\_API\_EXT.1 Use of Supported Services and APIs

**FPT\_API\_EXT.1.1** The application shall use only documented platform APIs.

### FPT\_AEX\_EXT.1 Anti-Exploitation Capabilities

**FPT\_AEX\_EXT.1.1** The application shall not request to map memory at an explicit address except for *[no exceptions]*.

**FPT\_AEX\_EXT.1.2** The application shall [not allocate any memory region with both write and execute permissions].

**FPT\_AEX\_EXT.1.3** The application shall be compatible with security features provided by the platform vendor.

**FPT\_AEX\_EXT.1.4** The application shall not write user-modifiable files to directories that contain executable files unless explicitly directed by the user to do so.

**FPT\_AEX\_EXT.1.5** The application shall be built with stack-based buffer overflow protection enabled.

### FPT\_TST\_EXT.1/VPN TSF Self-Test (VPN Client)

**FPT\_TST\_EXT.1.1/VPN** The [TOE] shall run a suite of self tests during initial start-up (on power on) to demonstrate the correct operation of the TSF.

**FPT\_TST\_EXT.1.2/VPN** The [TOE platform] shall provide the capability to verify the integrity of stored TSF executable code when it is loaded for execution through the use of the *[cryptographic signature verification service provided by the TOE Platform]*.

### FPT\_TUD\_EXT.1 Integrity for Installation and Update

**FPT\_TUD\_EXT.1.1** The application shall [leverage the platform] to check for updates and patches to the application software.

**FPT\_TUD\_EXT.1.2** The application shall [provide the ability] to query the current version of the application software.

**FPT\_TUD\_EXT.1.3** The application shall not download, modify, replace or update its own binary code.

**FPT\_TUD\_EXT.1.4** The application updates shall be digitally signed such that the application platform can cryptographically verify them prior to installation.

**FPT\_TUD\_EXT.1.5** The application is distributed [as an additional software package to the platform OS].

### FPT\_TUD\_EXT.2 Integrity for Installation and Update

**FPT\_TUD\_EXT.2.1** The application shall be distributed using the format of the platform-supported package manager.

**FPT\_TUD\_EXT.2.2** The application shall be packaged such that its removal results in the deletion of all traces of the application, with the exception of configuration settings, output files, and audit/log events.

**FPT\_TUD\_EXT.2.3** The application installation package shall be digitally signed such that its platform can cryptographically verify them prior to installation.

### FPT\_LIB\_EXT.1 Use of Third Party Libraries

**FPT\_LIB\_EXT.1.1** The application shall be packaged with only *[OpenSSL, Boost, Knox, gson, libxml, libcurl]*.

### FPT\_IDV\_EXT.1 Software Identification and Versions

**FPT\_IDV\_EXT.1.1** The application shall be versioned with [*sequence-based versioning control*].

## Class: Trusted Path/Channels (FTP)

### FTP\_DIT\_EXT.1 Protection of Data in Transit

**FTP\_DIT\_EXT.1.1** The application shall *[not encrypt any [sensitive data]]* between itself and another trusted IT product.

### TOE SFR Dependencies Rationale

[PP\_APP\_V1.3] and [MOD\_VPNC\_V2.3] contain all the requirements claimed in this Security Target. As such the dependencies are not applicable since the PPs themselves have been approved.

### Security Assurance Requirements

The TOE assurance requirements for this ST are taken directly from [PP\_APP\_V1.3] and [MOD\_VPNC\_V2.3] which are derived from [CC\_PART3]. The assurance requirements are summarized in the table below.

**Table 12. Assurance Requirements**

Assurance Class	Components Description
Security Target (ASE)	Conformance claims (ASE_CCL.1)
	Extended components definition (ASE_ECD.1)
	ST introduction (ASE_INT.1)
	Security objectives for the operational environment (ASE_OBJ.1)
	Stated security requirements (ASE_REQ.1)
	TOE summary specification (ASE_TSS.1)
Development (ADV)	Basic functional specification (ADV_FSP.1)
Guidance Documents (AGD)	Operational user guidance (AGD_OPE.1)
	Preparative procedures (AGD_PRE.1)
Life Cycle Support (ALC)	Labeling of the TOE (ALC_CMC.1)
	TOE CM coverage (ALC_CMS.1)
	Timely Security Updates (ALC_TSU_EXT.1)
Tests (ATE)	Independent testing – conformance (ATE_IND.1)
Vulnerability Assessment (AVA)	Vulnerability survey (AVA_VAN.1)

### Security Assurance Requirements Rationale

The Security Functional Requirements included in the ST represent all mandatory, optional, and selection-based SFRs specified in [PP\_APP\_V1.3] and [MOD\_VPNC\_V2.3] against which exact compliance is claimed.

All dependency rationale in the ST are considered to be identical to those that are defined in the claimed PP.

## Assurance Measures

The TOE satisfies the identified assurance requirements. The table below identifies the Assurance Measures applied by Cisco to satisfy the assurance requirements.

**Table 13. Assurance Measures**

Assurance Component	Rationale
ASE_INT.1 ASE_CCL.1 ASE_OBJ.1 ASE_ECD.1 ASE_REQ.1 ASE_TSS.1	Cisco provided this Security Target document.
ADV_FSP.1	No additional "functional specification" documentation was provided by Cisco to satisfy the Evaluation Activities.
AGD_OPE.1 AGD_PRE.1	Cisco will provide the guidance documents with the ST.
ALC_CMC.1 ALC_CMS.1	Cisco will identify the TOE such that it can be distinguished from other products or versions from the Cisco and can be easily specified when being procured by an end user.
ALC_TSU_EXT.1	Cisco will provide a Security Vulnerability Policy.
ATE_IND.1	Cisco will provide the TOE for testing.
AVA_VAN.1	Cisco will provide the TOE for Vulnerability Analysis.

## TOE Summary Specification

The table below identifies and describes how the Security Functional Requirements identified above are met by the TOE.

**Table 14. TSS Rationale**

TOE SFR	Rationale
FCS_CKM.1/VPN	<p>The TOE Platform provides a specified key generation algorithm to generate asymmetric cryptographic keys for IKE authentication. The key sizes are:</p> <ul style="list-style-type: none"> <li>■ RSA scheme: 2048 bit</li> <li>■ ECC using NIST curve of P-256 and P-384</li> </ul> <p>The key generation function is invoked by the TOE platform Administrator using a MDM product.</p>
FCS_CKM_EXT.1 FCS_CKM.1(1)	<p>Key generation for asymmetric keys used by IPsec for key establishment is provided by the TOE and is implemented using ECDSA with NIST curve sizes P-256 and P-384 according to FIPS PUB 186-4, "Digital Signature Standard (DSS)", Appendix B.4.</p>
FCS_CKM.2	<p>To support IPsec the TOE implements the following algorithms to perform key establishment:</p> <ul style="list-style-type: none"> <li>■ ECC key establishment schemes that meet SP800-56A.</li> </ul>
FCS_COP.1(1)	<p>The TOE provides symmetric encryption and decryption capabilities using AES supporting the following modes:</p> <ul style="list-style-type: none"> <li>■ CBC mode as specified in NIST SP 800-38A.</li> <li>■ GCM mode as specified in NIST SP 800-38D.</li> </ul> <p>The TOE uses AES in IPsec using the following modes and key sizes: CBC mode with key size of 128 and 256 bits. GCM mode with key sizes of 128 and 256 bits.</p>
FCS_COP.1(2)	<p>The TOE provides cryptographic hashing services in support of HMAC in IKEv2 and IPsec using SHA-256 and SHA-384 as specified in FIPS Pub 180-3 "Secure Hash Standard."</p>
FCS_COP.1(3)	<p>The TOE provides cryptographic signature services using RSA Digital Signature Algorithm with key size of 2048 and Elliptic Curve Digital Signature Algorithm with a key size of 256 or 384 bits as specified in FIPS PUB 186-4, "Digital Signature Standard."</p>
FCS_COP.1(4)	<p>The TOE provides keyed-hashing message authentication services using HMAC-SHA-256 (key size – 256 bits, block size 512 bits) and HMAC-SHA-384 (key size – 384 bits, block size 1024 bits).</p>
FCS_RBG_EXT.1	<p>The TOE invokes /dev/urandom on the platform when needed to generate a cryptographic key. This applies to the following SFRs:</p> <p>FCS_CKM.2 – Cryptographic Key Establishment</p> <p>FCS_IPSEC_EXT.1 – IPsec Protocol</p>
FCS_STO_EXT.1	<p>The Cisco AnyConnect TOE leverages the platform to store X.509v3 certificates used by the TOE for IKE peer authentication. Certificates are stored in the Android KeyStore.</p>
FCS_CKM_EXT.2	<p>The TOE platform stores ECDSA and RSA private keys used by the TOE for IKE peer authentication. Private Keys are stored in the Android KeyStore.</p> <p>The TOE does not use pre-shared keys for IPsec.</p>

FCS_IPSEC_EXT.1	<p>The TOE's implementation of the IPsec standard (in accordance with RFC 4301) uses the Encapsulating Security Payload (ESP) protocol to provide authentication, encryption and anti-replay services. By default ESP operates in tunnel mode. No configuration is required by the user or administrator for the TOE to operate in tunnel mode.</p> <p>Remote access policies managed by the administrator of the ASA VPN Gateway provide an interface to create ACLs defining network segments that require IPsec protection. The default behavior of the remote access policy is for the TOE to protect all traffic with IPsec.</p> <p>If an organization explicitly permits use of split-tunneling, a remote access policy on the ASA VPN Gateway allows the administrator to define IPsec protection for the organization's network(s) but bypass protection for other traffic.</p> <p>The Cisco AnyConnect TOE is distributed as a separate software package to the platform OS. The Security Policy Database (SPD) is implemented by the underlying platform and the TOE interacts with the SPD through insertions of entries to the routing table on the host OS platform. Network(s) not subjected to the remote access policy, but reachable from the platform, such as Internet traffic, travels without being protected with IPsec by the TOE. SPD discard rules are performed exclusively by the TOE platform.</p> <p>The TOE implements IKEv2 and does not support IKEv1. IPsec Internet Key Exchange is the negotiation protocol that lets the TOE and a VPN Gateway agree on how to build an IPsec Security Association (SA). IKE separates negotiation into two phases: phase 1 and phase 2.</p> <p>During IKE Phase 1, the TOE authenticates the remote VPN Gateway using device-level authentication with ECDSA or RSA X.509v3 certificates provided by the TOE platform.</p> <p>The TOE compares its reference identifier to the identifier presented by the VPN Gateway peer. The TOE supports reference identifiers as configured by the Administrator to be either FQDN or IP address and compares it to the Subject Alternative Name (SAN) or the Common Name (CN) fields in the certificate of the peer. The order of comparison is SAN followed by CN. If the TOE successfully matches the reference identifier to the presented identifier, IKE Phase 1 authentication will succeed. Otherwise it will fail if it does not match.</p> <p>Phase 1 creates the first tunnel, which protects later IKE negotiation messages. The key negotiated in phase 1 enables IKE to communicate securely in phase 2. The TOE supports only IKEv2 session establishment. As part of this support, the TOE by default does not support aggressive mode used in IKEv1 exchanges.</p> <p>The TOE supports Diffie-Hellman Group 19 (256-bit Random ECP) and 20 (384-bit Random ECP) in support of IKE Key Establishment negotiated in phase 1. These keys are generated using the DRBG specified in FCS_RBG_EXT.1 having 256 bits of entropy. The administrator is instructed in the CC Configuration Guide to select a supported DH group using one of the following corresponding key sizes (in bits): 256 (for DH Group 19), and 384 (for DH Group 20) bits.</p> <p>For each DH Group, the TOE generates the secret value 'x' used in the IKEv2 Diffie-Hellman key exchange ('x' in <math>g^x \text{ mod } p</math>) using its DH private key, the IPsec peer's public key and a nonce. When a random number is needed for a nonce, the probability that a specific nonce value will be repeated during the life a specific IPsec SA is less than 1 in <math>2^{256}</math>. The nonce is likewise generated using the DRBG specified in FCS_RBG_EXT.1.</p> <p>During Phase 2, IKE negotiates the IPsec SA and includes:</p> <ul style="list-style-type: none"> <li>• The negotiation of mutually acceptable IPsec SA parameters;</li> <li>• The Pseudo-Random Function (PRF) is used for the construction of keying material for cryptographic algorithms used in the SA.</li> <li>• The establishment of IPsec Security Associations to protect packet flows using Encapsulating Security Payload (ESP).</li> </ul> <p>The resulting potential strength of the symmetric key will be 128 or 256 bits of security depending on the algorithms negotiated between the two IPsec peers. The VPN Gateway ensures</p>
-----------------	---

TOE SFR	Rationale
	<p>by default the strength of the symmetric algorithm (in terms of the number of bits in the key) negotiated to protect the IKEv2 IKE_SA connection is greater than or equal to the strength of the symmetric algorithm (in terms of the number of bits in the key) negotiated to protect the IKEv2 CHILD_SA connection.</p> <p>After IKE phase 2 completes, the IPsec SA is established, providing a secure tunnel to a remote VPN Gateway. The TOE uses active SA settings or creates new SAs for initial connections with the ASA VPN Gateway. The TOE supports administratively configured lifetimes for both Phase 1 SAs and Phase 2 SAs. The default time value for Phase 1 SAs is 24 hours. The value for Phase 2 SAs is configurable to 8 hours. Both values are configurable using management functions provided by the VPN Gateway.</p> <p>All ESP processing to authenticate, encrypt, and tunnel the traffic is performed by the TOE. The TOE performs IKEv2 payload and bulk IPsec encryption using AES-GCM-128, AES_GCM-256, AES-CBC-128, or AES-CBC-256 algorithms. The VPN Gateway allows the administrator to configure AES-GCM-128, AES_GCM-256, AES-CBC-128, and AES-CBC-256 encryption algorithms.</p>



FCS_CKM_EXT.4	<p>The TOE ensures volatile memory areas containing the following keys are zeroized:</p> <table border="1" data-bbox="537 241 1421 1822"> <thead> <tr> <th data-bbox="537 241 841 275">Key, Secret, or CSP</th> <th data-bbox="841 241 1154 275">Purpose</th> <th data-bbox="1154 241 1421 275">Zeroization Method</th> </tr> </thead> <tbody> <tr> <td data-bbox="537 275 841 436">SK_ei</td> <td data-bbox="841 275 1154 436">IKE SA Initiator Encryption Key</td> <td data-bbox="1154 275 1421 436">Overwritten with zeros when no longer in use by the IPsec VPN trusted channel.</td> </tr> <tr> <td data-bbox="537 436 841 598">SK_er</td> <td data-bbox="841 436 1154 598">IKE SA Responder Encryption Key</td> <td data-bbox="1154 436 1421 598">Overwritten with zeros when no longer in use by the IPsec VPN trusted channel.</td> </tr> <tr> <td data-bbox="537 598 841 760">SK_ai</td> <td data-bbox="841 598 1154 760">IKE SA Initiator Integrity Key</td> <td data-bbox="1154 598 1421 760">Overwritten with zeros when no longer in use by the IPsec VPN trusted channel.</td> </tr> <tr> <td data-bbox="537 760 841 921">SK_ar</td> <td data-bbox="841 760 1154 921">IKE SA Responder Integrity Key</td> <td data-bbox="1154 760 1421 921">Overwritten with zeros when no longer in use by the IPsec VPN trusted channel.</td> </tr> <tr> <td data-bbox="537 921 841 1083">Diffie-Hellman Shared Secret</td> <td data-bbox="841 921 1154 1083">IKE v2 SA setup</td> <td data-bbox="1154 921 1421 1083">Overwritten with zeros when no longer in use by the IPsec VPN trusted channel.</td> </tr> <tr> <td data-bbox="537 1083 841 1381">SK_d</td> <td data-bbox="841 1083 1154 1381">IKEv2 SA key from which child IPsec keys are derived.</td> <td data-bbox="1154 1083 1421 1381">Overwritten with zeros when no longer in use by the IPsec VPN trusted channel.</td> </tr> <tr> <td data-bbox="537 1381 841 1659">Initiator encryption and integrity key</td> <td data-bbox="841 1381 1154 1659">IPsec child SA key that encrypts and authenticates outgoing ESP traffic.</td> <td data-bbox="1154 1381 1421 1659">Overwritten with zeros when no longer in use by the IPsec VPN trusted channel.</td> </tr> <tr> <td data-bbox="537 1659 841 1822">Responder encryption and integrity key</td> <td data-bbox="841 1659 1154 1822">IPsec child SA key that decrypts and authenticates incoming ESP traffic.</td> <td data-bbox="1154 1659 1421 1822">Overwritten with zeros when no longer in use by the IPsec VPN trusted channel.</td> </tr> </tbody> </table> <p>The TOE platform zeroizes private keys it manipulates and stores on the TOE platform:</p>	Key, Secret, or CSP	Purpose	Zeroization Method	SK_ei	IKE SA Initiator Encryption Key	Overwritten with zeros when no longer in use by the IPsec VPN trusted channel.	SK_er	IKE SA Responder Encryption Key	Overwritten with zeros when no longer in use by the IPsec VPN trusted channel.	SK_ai	IKE SA Initiator Integrity Key	Overwritten with zeros when no longer in use by the IPsec VPN trusted channel.	SK_ar	IKE SA Responder Integrity Key	Overwritten with zeros when no longer in use by the IPsec VPN trusted channel.	Diffie-Hellman Shared Secret	IKE v2 SA setup	Overwritten with zeros when no longer in use by the IPsec VPN trusted channel.	SK_d	IKEv2 SA key from which child IPsec keys are derived.	Overwritten with zeros when no longer in use by the IPsec VPN trusted channel.	Initiator encryption and integrity key	IPsec child SA key that encrypts and authenticates outgoing ESP traffic.	Overwritten with zeros when no longer in use by the IPsec VPN trusted channel.	Responder encryption and integrity key	IPsec child SA key that decrypts and authenticates incoming ESP traffic.	Overwritten with zeros when no longer in use by the IPsec VPN trusted channel.
Key, Secret, or CSP	Purpose	Zeroization Method																										
SK_ei	IKE SA Initiator Encryption Key	Overwritten with zeros when no longer in use by the IPsec VPN trusted channel.																										
SK_er	IKE SA Responder Encryption Key	Overwritten with zeros when no longer in use by the IPsec VPN trusted channel.																										
SK_ai	IKE SA Initiator Integrity Key	Overwritten with zeros when no longer in use by the IPsec VPN trusted channel.																										
SK_ar	IKE SA Responder Integrity Key	Overwritten with zeros when no longer in use by the IPsec VPN trusted channel.																										
Diffie-Hellman Shared Secret	IKE v2 SA setup	Overwritten with zeros when no longer in use by the IPsec VPN trusted channel.																										
SK_d	IKEv2 SA key from which child IPsec keys are derived.	Overwritten with zeros when no longer in use by the IPsec VPN trusted channel.																										
Initiator encryption and integrity key	IPsec child SA key that encrypts and authenticates outgoing ESP traffic.	Overwritten with zeros when no longer in use by the IPsec VPN trusted channel.																										
Responder encryption and integrity key	IPsec child SA key that decrypts and authenticates incoming ESP traffic.	Overwritten with zeros when no longer in use by the IPsec VPN trusted channel.																										

TOE SFR	Rationale									
	<table border="1"> <thead> <tr> <th>Key, Secret, or CSP</th> <th>Purpose</th> <th>Zeroization Method</th> </tr> </thead> <tbody> <tr> <td>Asymmetric RSA Private Key stored on the Android 11 platform</td> <td>RSA digital signature generation</td> <td>Performed exclusively by the TOE Platform.</td> </tr> <tr> <td>Asymmetric ECDSA Private Key stored on the Android 11 platform</td> <td>ECDSA digital signature generation</td> <td>Performed exclusively by the TOE Platform.</td> </tr> </tbody> </table>	Key, Secret, or CSP	Purpose	Zeroization Method	Asymmetric RSA Private Key stored on the Android 11 platform	RSA digital signature generation	Performed exclusively by the TOE Platform.	Asymmetric ECDSA Private Key stored on the Android 11 platform	ECDSA digital signature generation	Performed exclusively by the TOE Platform.
Key, Secret, or CSP	Purpose	Zeroization Method								
Asymmetric RSA Private Key stored on the Android 11 platform	RSA digital signature generation	Performed exclusively by the TOE Platform.								
Asymmetric ECDSA Private Key stored on the Android 11 platform	ECDSA digital signature generation	Performed exclusively by the TOE Platform.								
FDP_DEC_EXT.1	The Cisco AnyConnect TOE restricts access to network connectivity, camera, fingerprint reader, and external storage hardware resources.									
FDP_NET_EXT.1	The Cisco AnyConnect TOE limits network communication to user initiated communication for IKEv2/IPsec tunnel establishment.									
FDP_DAR_EXT.1	Sensitive data in the TOE is defined as the private key used for X.509 certificate generation and peer authentication, which is protected in accordance with FCS_STO.EXT.1.									
FDP_RIP.2	The TOE platform transmits packets over WiFi or cellular radio and therefore is responsible for clearing residual information.									

TOE SFR	Rationale
FIA_X509_EXT.1	<p>The Cisco AnyConnect TOE invokes functionality provided by the platform to perform certificate path validation on the certificate chain presented by ASA VPN Gateway. The certificate path validation begins with the identity certificate presented by ASA VPN Gateway and proceeds through intermediate CA certificate(s) up to a trusted root certificate issued by a trusted certificate authority (CA). The following steps are performed for each certificate in the path:</p> <ul style="list-style-type: none"> <li>• The certificate must not be expired.</li> <li>• The certificate must not be revoked.</li> <li>• The issuer name is checked to ensure it matches the subject name of the previous certificate in the chain.</li> <li>• All CA certificates must have the basicConstraints extension present and be of type CA=TRUE.</li> <li>• The extendedKeyUsage field must be valid based on the following rules: <ul style="list-style-type: none"> <li>○ Certificates used for trusted updates and executable code integrity verification shall have the Code Signing purpose (id-kp 3 with OID 1.3.6.1.5.5.7.3.3) in the extendedKeyUsage field.</li> <li>○ Server certificates presented for TLS shall have the Server Authentication purpose (id-kp 1 with OID 1.3.6.1.5.5.7.3.1) in the extendedKeyUsage field.</li> <li>○ Client certificates presented for TLS shall have the Client Authentication purpose (id-kp 2 with OID 1.3.6.1.5.5.7.3.2) in the extendedKeyUsage field.</li> <li>○ S/MIME certificates presented for email encryption and signature shall have the Email Protection purpose (id-kp 4 with OID 1.3.6.1.5.5.7.3.4) in the extendedKeyUsage field.</li> <li>○ OCSP certificates presented for OCSP responses shall have the OCSP Signing purpose (id-kp 9 with OID 1.3.6.1.5.5.7.3.9) in the extendedKeyUsage field.</li> <li>○ Server certificates presented for EST shall have the CMC Registration Authority (RA) purpose (id-kp-cmcRA with OID 1.3.6.1.5.5.7.3.28) in the extendedKeyUsage field</li> </ul> </li> </ul> <p>The Cisco AnyConnect TOE implements revocation checking itself using OCSP. This includes verifying the OCSP response is signed with a cert that has the OCSP signing purpose.</p> <p>These checks ensure certificate validation results in a trusted root certificate. At any point if a certificate cannot be successfully validated, the CC Configuration Guide instructs the administrator to configure the TOE to not allow the user an option for continuing the connection. In all cases, if a certificate or certificate path cannot be validated, the TOE will not establish an IPsec connection to an untrusted ASA VPN Gateway.</p>
FIA_X509_EXT.2	<p>During TOE installation the user imports a new certificate to the certificate store. The user can also select the certificate used by tapping 'Import' and then 'Device Credential Storage'.</p> <p>The Cisco AnyConnect TOE compares the FQDN of the server it is establishing connectivity with, against the Subject Alternate Name-dnsName attributes in the certificate. If AnyConnect determines there is a mismatch, it will not establish the IPsec trusted channel.</p> <p>At any point if a certificate cannot be successfully validated, the CC Configuration Guide instructs the administrator to configure the TOE to not allow the user an option for continuing the connection.</p> <p>In all cases, if a certificate or certificate path cannot be validated, the TOE will not establish an IPsec connection to an untrusted VPN Gateway.</p>

TOE SFR	Rationale
FMT_MEC_EXT.1	<p>All IPsec configuration for the Cisco AnyConnect TOE is stored remotely on the Cisco ASA VPN Gateway.</p> <p>As described in guidance the user controls the following settings which must enabled:</p> <p>"Block Untrusted Servers"</p> <p>"Set VPN FIPS Mode"</p> <p>"Strict Certificate Trust Mode"</p> <p>"OCSP Revocation"</p>
FMT_CFG_EXT.1	<p>The Cisco AnyConnect TOE requires client credentials to be used for connection but is not installed with any preset default credentials. In context of the AnyConnect TOE, client credentials are a X.509 certificate which is used to authenticate the ASA VPN Gateway during establishment of an IPsec session.</p> <p>Users can only access files which are associated to the installation that user performed.</p>
FMT_SMF.1	<p>The Cisco AnyConnect TOE does not perform any security management functions from [PP_APP_V1.3].</p>
FMT_SMF.1/VPN	<p>The Cisco AnyConnect TOE is capable of the following security management functions from [MOD_VPNC_V2.3]:</p> <ul style="list-style-type: none"> <li>■ Specify VPN gateways to use for connections</li> <li>■ Specify client credentials to be used for connections</li> <li>■ Configuring the reference identifier of the peer</li> </ul> <p>In context of the AnyConnect TOE, client credentials are a X.509 certificate which is used to authenticate the ASA VPN Gateway during establishment of an IPsec session.</p>
FPR_ANO_EXT.1	<p>The Cisco AnyConnect TOE does not transmit PII.</p>

FPT_API_EXT.1	<p>The Cisco AnyConnect TOE uses the following platform APIs:</p> <ul style="list-style-type: none"><li>■ java.io.BufferedOutputStream</li><li>■ java.io.BufferedReader</li><li>■ java.io.ByteArrayInputStream</li><li>■ java.io.ByteArrayOutputStream</li><li>■ java.io.File</li><li>■ java.io.FileDescriptor</li><li>■ java.io.FileInputStream</li><li>■ java.io.FileNotFoundException</li><li>■ java.io.FileOutputStream</li><li>■ java.io.IOException</li><li>■ java.io.InputStream</li><li>■ java.io.InputStreamReader</li><li>■ java.io.ObjectInputStream</li><li>■ java.io.ObjectOutputStream</li><li>■ java.io.Serializable</li><li>■ java.io.UnsupportedEncodingException</li><li>■ java.lang.reflect.Constructor</li><li>■ java.lang.reflect.Method</li><li>■ java.net.InetAddress</li><li>■ java.nio.charset.Charset</li><li>■ java.security.InvalidAlgorithmParameterException</li><li>■ java.security.InvalidKeyException</li><li>■ java.security.Key</li><li>■ java.security.KeyFactory</li><li>■ java.security.KeyStore</li><li>■ java.security.KeyStoreException</li><li>■ java.security.NoSuchAlgorithmException</li><li>■ java.security.Principal</li><li>■ java.security.PrivateKey</li><li>■ java.security.Signature</li><li>■ java.security.UnrecoverableKeyException</li></ul>
---------------	--

	<ul style="list-style-type: none"><li>■ java.security.cert.CertPath</li><li>■ java.security.cert.CertPathBuilder</li><li>■ java.security.cert.CertPathValidator</li><li>■ java.security.cert.CertPathValidatorException</li><li>■ java.security.cert.CertStore</li><li>■ java.security.cert.CertStoreException</li><li>■ java.security.cert.Certificate</li><li>■ java.security.cert.CertificateEncodingException</li><li>■ java.security.cert.CertificateException</li><li>■ java.security.cert.CertificateExpiredException</li><li>■ java.security.cert.CertificateFactory</li><li>■ java.security.cert.CertificateNotYetValidException</li><li>■ java.security.cert.CertificateParsingException</li><li>■ java.security.cert.CollectionCertStoreParameters</li><li>■ java.security.cert.PKIXBuilderParameters</li><li>■ java.security.cert.PKIXCertPathBuilderResult</li><li>■ java.security.cert.PKIXParameters</li><li>■ java.security.cert.TrustAnchor</li><li>■ java.security.cert.X509CertSelector</li><li>■ java.security.cert.X509Certificate</li><li>■ java.security.spec.InvalidKeySpecException</li><li>■ java.util.ArrayList</li><li>■ java.util.Arrays</li><li>■ java.util.Collection</li><li>■ java.util.Collections</li><li>■ java.util.HashMap</li><li>■ java.util.HashSet</li><li>■ java.util.LinkedHashMap</li><li>■ java.util.LinkedList</li><li>■ java.util.List</li><li>■ java.util.Locale</li><li>■ java.util.Map.Entry</li></ul>
--	---

TOE SFR	Rationale
	<ul style="list-style-type: none"> <li>■ java.util.Map</li> <li>■ java.util.Objects</li> <li>■ java.util.Set</li> <li>■ java.util.TreeMap</li> <li>■ java.util.concurrent.CopyOnWriteArraySet</li> <li>■ java.util.concurrent.CountDownLatch</li> <li>■ java.util.concurrent.TimeUnit</li> <li>■ java.util.zip.ZipEntry</li> <li>■ java.util.zip.ZipInputStream</li> <li>■ javax.crypto.Cipher</li> <li>■ javax.net.ssl.SSLException</li> <li>■ javax.net.ssl.TrustManager</li> <li>■ javax.net.ssl.TrustManagerFactory</li> <li>■ javax.net.ssl.X509TrustManager</li> <li>■ org.apache.http.conn.ssl.StrictHostnameVerifier</li> <li>■ org.apache.http.conn.ssl.X509HostnameVerifier</li> </ul>
FPT_AEX_EXT.1	<p>The Cisco AnyConnect TOE enables ASLR and stack protection by fPIE -pie and the -fstack-protector-all flags.</p>
<p>FPT_TUD_EXT.1 FPT_TUD_EXT.2 ALC_TSU_EXT.1</p>	<p>The TOE has specific versions that can be queried by a user. A TOE update is not a patch applied to the existing TOE, it is a new version of the TOE. When TOE updates are made available by Cisco, an administrator can obtain and install the update. Upon installation of a TOE update, a digital signature verification check will automatically be performed to ensure it has not been modified since distribution. The authorized source for the digitally signed updates is "Cisco Systems, Inc."</p> <p>All Cisco communications relating to security issues are handled by the Cisco Product Security Incident Response Team (PSIRT). Cisco aims to provide fixes in 30 days but depending on the timing it may be greater than 30 days though not more than 60 days for most security issues. Fixes may be delayed longer for low-risk security issues. Updates are then made available at Cisco Software Central available at: <a href="https://software.cisco.com">https://software.cisco.com</a>.</p> <p>Customers can subscribe to the Cisco Notification Service allows users to subscribe and receive important information regarding product updates. Full information is provide in the Cisco Security Vulnerability Policy available at: <a href="https://tools.cisco.com/security/center/resources/security_vulnerability_policy.html">https://tools.cisco.com/security/center/resources/security_vulnerability_policy.html</a></p>

TOE SFR	Rationale
FPT_LIB_EXT.1	<p>The Cisco AnyConnect TOE is packaged with the following third-party libraries:</p> <ul style="list-style-type: none"><li>■ OpenSSL</li><li>■ Boost</li><li>■ Knox</li><li>■ gson</li><li>■ libxml</li><li>■ libcurl</li><li>■ sqlite3</li></ul>
FPT_IDV_EXT.1	<p>The Cisco AnyConnect TOE uses a sequence-based versioning control system. The application uses the major.minor.build format for versioning control. For example: 4.10.00093.</p> <ul style="list-style-type: none"><li>■ Major (4 in the example above) designates a release where significant new features are added.</li><li>■ Minor (10 in the example above) designates a release where minor new features are added.</li><li>■ Build (00093 in the example above) designates a software build number.</li></ul>



TOE SFR	Rationale
FPT_TST_EXT.1	<p>As a software product incorporating a cryptographic module, the TOE runs a suite of self-tests during start-up to verify its correct operation.</p> <p>These tests include:</p> <ul style="list-style-type: none"> <li>■ AES Known Answer Test – For the encrypt test, a known key is used to encrypt a known plain text value resulting in an encrypted value. This encrypted value is compared to a known encrypted value to ensure that the encrypt operation is working correctly. The decrypt test is just the opposite. In this test a known key is used to decrypt a known encrypted value. The resulting plaintext value is compared to a known plaintext value to ensure that the decrypt operation is working correctly.</li> <li>■ RSA Signature Known Answer Test (both signature/verification) – This test takes a known plaintext value and Private/Public key pair and used the public key to encrypt the data. This value is compared to a known encrypted value to verify that encrypt operation is working properly. The encrypted data is then decrypted using the private key. This value is compared to the original plaintext value to ensure the decrypt operation is working properly.</li> <li>■ ECDSA Signature Test – This test takes a known plaintext value and Private/Public key pair and used the public key to encrypt the data. This value is compared to a known encrypted value to verify that encrypt operation is working properly. The encrypted data is then decrypted using the private key. This value is compared to the original plaintext value to ensure the decrypt operation is working properly.</li> <li>■ HMAC Known Answer Test– For each of the hash values (256 and 384), the HMAC implementation is fed known plaintext data and a known key. These values are used to generate a MAC. This MAC is compared to a known MAC to verify that the HMAC and hash operations are operating correctly.</li> <li>■ SHA Known Answer Test – For each of the values (256 and 384), the SHA implementation is fed known data and key. These values are used to generate a hash. This hash is compared to a known value to verify they match and the hash operations are operating correctly.</li> <li>■ Software Integrity Test - The Software Integrity Test is run automatically whenever the module is loaded and confirms the image has maintained its integrity.</li> </ul> <p>If any self-test fails subsequent invocation of any cryptographic function calls is prevented. If all components of the power-up self-test are successful then the product is in FIPS mode.</p> <p>Integrity verification is performed each time the AnyConnect app is loaded and it will wait for the integrity verification to complete. Cryptographic services provided by the TOE platform are invoked to verify the digital signature of the TOE's executable files. If the integrity verification fails to successfully complete, the GUI will not load, rendering the app unusable. If the integrity verification is successful, the app GUI will load and operate normally. These tests are sufficient to verify that the TOE software is operating correctly as well as the cryptographic operations are all performing as expected.</p>
FTP_DIT_EXT.1	<p>The Cisco AnyConnect TOE itself is the application, and does not maintain any sensitive data of its own. Therefore, there is no need to protect (through FPT_DIT_EXT.1.1) VPN-client-specific data.</p>

## CAVP Certificates

The table below lists the CAVP certificates for the TOE

Table 15. CAVP Certificates

SFR	Algorithm	Certificate Number
FCS_CKM.1(1) FCS_CKM_EXT.1	ECDSA KeyGen and KeyVer (FIPS186-4) Curve/Key sizes supported: P-256, P-384	A1881 (Cisco)
FCS_CKM.2	KAS-ECC-SSC SP800-56Ar3 Curve/Key sizes supported: P-256, P-384	A1881 (Cisco)
FCS_COP.1(1)	AES-CBC Encrypt/Decrypt AES-GCM Encrypt/Decrypt Key sizes supported: 128, 256 bits	A1881 (Cisco)
FCS_COP.1(2)	SHS Hash sizes supported: SHA2-256, SHA2-384	A1881 (Cisco)
FCS_COP.1(3) FCS_CKM.1/VPN	RSA SigGen and SigVer (FIPS186-4) Key size supported: 2048 bits ECDSA SigGen and SigVer (FIPS186-4) Curve/Key sizes supported: P-256, P-384	A1881 (Cisco)
FCS_COP.1(4)	HMAC Hash sizes supported: SHA2-256, SHA2-384	A1881 (Cisco)

## References

The documentation listed below was used to prepare this ST

**Table 16. References**

Identifier	Description
[CC_PART1]	Common Criteria for Information Technology Security Evaluation – Part 1: Introduction and general model, dated September 2012, version 3.1, Revision 5, CCMB-2017-04-001
[CC_PART2]	Common Criteria for Information Technology Security Evaluation – Part 2: Security functional components, dated September 2012, version 3.1, Revision 5, CCMB-2017-04-002
[CC_PART3]	Common Criteria for Information Technology Security Evaluation – Part 3: Security assurance components, dated September 2012, version 3.1, Revision 5, CCMB-2017-04-003
[CEM]	Common Methodology for Information Technology Security Evaluation – Evaluation Methodology, dated September 2012, version 3.1, Revision 5, CCMB-2017-04-004
[PP_APP_V1.3]	Protection Profile for Application Software Version 1.3, March 1 <sup>st</sup> , 2019
[MOD_VPNC_V2.3]	PP-Module for VPN Client Version 2.3, [10 August 2021]
[SD]	Supporting Document – PP-Module for Virtual Private Network (VPN) Client, Version 2.3, [10 August 2021]

## Acronyms and Terms

The following acronyms and terms are common and may be used in this Security Target.

**Table 17. Acronyms and Terms**

Acronym/Term	Definition
AES	Advanced Encryption Standard
CC	Common Criteria for Information Technology Security Evaluation
CEM	Common Evaluation Methodology for Information Technology Security
CM	Configuration Management
DRBG	Deterministic Random Bit Generator
EAL	Evaluation Assurance Level
EC-DH	Elliptic Curve-Diffie-Hellman
ECDSA	Elliptic Curve Digital Signature Algorithm
ESP	Encapsulating Security Payload
GCM	Galois Counter Mode
HMAC	Hash Message Authentication Code
IKE	Internet Key Exchange

IPsec	Internet Protocol Security
IT	Information Technology
NGE	Next Generation Encryption
OS	Operating System
PP	Protection Profile
PII	Personally Identifiable Information
PRF	Pseudo-Random Functions
RFC	Request For Comment
SHS	Secure Hash Standard
SPD	Security Policy Database
ST	Security Target
TCP	Transport Control Protocol
TIMA	TrustZone Integrity Measurement Architecture
TOE	Target of Evaluation
TSC	TSF Scope of Control
TSF	TOE Security Function
TSP	TOE Security Policy
UDP	User datagram protocol
VPN	Virtual Private Network
AES	Advanced Encryption Standard

## Obtaining Documentation and Submitting a Service Request

For information on obtaining documentation, using the Cisco Bug Search Tool (BST), submitting a service request, and gathering additional information, see [What's New in Cisco Product Documentation](#).

To receive new and revised Cisco technical content directly to your desktop, you can subscribe to the [What's New in Cisco Product Documentation RSS feed](#). The RSS feeds are a free service.

## Contacting Cisco

Cisco has more than 200 offices worldwide. Addresses, phone numbers, and fax numbers are listed on the Cisco website at [www.cisco.com/go/offices](http://www.cisco.com/go/offices).